

**UPPCL  
JE**

**Previous Year Paper  
Electrical 7 Sept 2021  
(Shift 1)**





# Uttar Pradesh Power Corporation Limited

Electricity Service Commission, Uttar Pradesh Power Corporation Ltd. S.L.D.C campus, near Mantri Awas, Vibhuti Khand Phase-2, Gomti Nagar, Lucknow-226010

Participant ID	
Participant Name	
Test Center Name	
Test Date	07/09/2021
Test Time	9:00 AM - 12:00 PM
Subject	Junior Engineer (Trainee) Electrical

Section : Domain Knowledge

Q.1 According to IE rules for service connection for low and medium voltage line, the height of service line conductors erected across a street must NOT be less than:

- Ans  A. 5.490 m  
 B. 5.975 m  
 C. 6.10 m  
 D. 5.18 m

Question ID : 9277591885  
Status : Answered  
Chosen Option : A

Q.2 How many AND and OR gates are required to realise  $Y = AB + BC + CD$ ?

- Ans
- A. 2, 3
  - B. 2, 1
  - C. 3, 2
  - D. 2, 2

Question ID : 9277591769  
Status : Answered  
Chosen Option : C

Q.3 Which type of transmission system is NOT considered for a DC system?

- Ans
- A. DC two wires with midpoint earthed
  - B. DC three wires
  - C. DC two wires
  - D. DC four wires with line earthed

Question ID : 9277591853  
Status : Answered  
Chosen Option : D

Q.4 In half adder, the total number of inputs and outputs are:

- Ans
- A. 1, 2
  - B. 2, 1
  - C. 3, 2
  - D. 2, 2

Question ID : 9277591774  
Status : Answered  
Chosen Option : D

AEC PLUS  
POWERED BY  
Advance Engineering Classes

Q.5 Which extension is used for an AutoCAD drawing file?

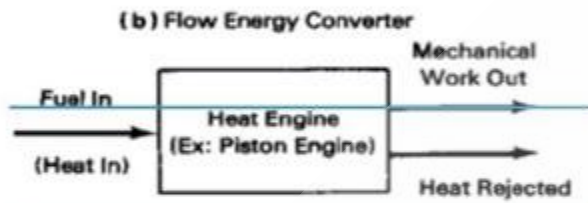
- Ans
- A. PDW
  - B. DXG
  - C. DWX
  - D. DWG

Question ID : 9277591845

Status : Answered

Chosen Option : C

Q.6 The expression for efficiency of the converter shown in the figure is defined by:



- Ans
- A. Heat in/work out
  - B. Work out / heat in
  - C. Heat Rejected/ fuel in
  - D. Heat Rejected / heat in

Question ID : 9277591862

Status : Answered

Chosen Option : B

Q.7 Which software provides automation in electrical power system?

- Ans  A. Pspice  
 B. EAPT  
 C. ETAP  
 D. PSCAD

Question ID : 9277591842  
Status : Answered  
Chosen Option : A

Q.8 Which parameter is NOT considered for site selection of hydroelectric plant?

- Ans  A. Land with rocks  
 B. Availability of water  
 C. Sedimentation  
 D. Large storage area

Question ID : 9277591822  
Status : Answered  
Chosen Option : B

Q.9 Which of the following is NOT related to overhead lines?

- Ans  A. Supports  
 B. Conductors  
 C. Insulators  
 D. Cable tray

Question ID : 9277591884  
Status : Answered  
Chosen Option : D

AEC PLUS  
POWERED BY  
Advance Engineering Classes

Q.10 Which method is used for transferring the power through an auto transformer?

- Ans
- A. Induction
  - B. Conduction
  - C. Mutual coupling
  - D. Conduction and induction

Question ID : 9277591780  
Status : Answered  
Chosen Option : D

Q.11 A device which controls the high current on the load side is known as:

- Ans
- A. MOSFET
  - B. TRIAC
  - C. SCR
  - D. GTO

Question ID : 9277591797  
Status : Answered  
Chosen Option : B

Q.12 The single phase energy meter, displays the consumed energy in \_\_\_\_\_.

- Ans
- A. Kilowatt
  - B. Volt ampere reactive
  - C. Kilowatt-hour
  - D. Volt ampere

Question ID : 9277591785  
Status : Answered  
Chosen Option : C

AEC PLUS  
POWERED BY  
Advance Engineering Classes

Q.13 Which is the basic power equation of dynamo (DC machine)?

- Ans
- A.  $P_{\text{output}} = P_{\text{input}}$
  - B.  $P_{\text{input}} = P_{\text{output}} - P_{\text{loss}}$
  - C.  $P_{\text{output}} = P_{\text{input}} + P_{\text{loss}}$
  - D.  $P_{\text{input}} = P_{\text{output}} + P_{\text{loss}}$

Question ID : 9277591775  
Status : Answered  
Chosen Option : D

Q.14 Which type of measuring instrument widely used in power system for measuring the energy?

- Ans
- A. Rectification type
  - B. Induction type
  - C. Moving coil or iron type
  - D. Electrostatic type

Question ID : 9277591791  
Status : Answered  
Chosen Option : B

Q.15 Which of the following is a semiconductor material?

- Ans
- A. Paper
  - B. Silicon
  - C. Rubber
  - D. Aluminium

Question ID : 9277591763  
Status : Answered  
Chosen Option : B

AEC PLUS  
POWERED BY  
Advance Engineering Classes



Q.16 The number of poles required to achieve a speed of 1800 RPM, when operated on 400V, 60 Hz frequency is:

- Ans
- A. 2
  - B. 4
  - C. 6
  - D. 8

Question ID : 9277591783  
Status : Answered  
Chosen Option : B

Q.17 Which of the following defines the armature current in a DC shunt generator?

- Ans
- A.  $\frac{E_g + V}{R_a}$
  - B.  $\frac{E_g - V}{R_a}$
  - C.  $I_L - I_{sh}$
  - D.  $\frac{E_g}{R_a}$

Question ID : 9277591779  
Status : Answered  
Chosen Option : B

**AEC PLUS**  
POWERED BY  
Advance Engineering Classes



Q.18 छोटा उद्यम वह उद्यम होता है, जहां संयंत्र और मशीनरी में निवेश (MSMED अधिनियम, 2006 के अनुसार) \_\_\_\_\_ से अधिक नहीं होता है।

- Ans
- A. 25 लाख रुपये
  - B. 3 करोड़ रुपये
  - C. 100 लाख रुपये
  - D. 5 करोड़ रुपये

Question ID : 9277591827  
Status : Answered  
Chosen Option : C

Q.19 Which of the following defines the ocean thermal energy conversion?

- Ans
- A. Technology for producing energy by ocean wave force of surface waters
  - B. Technology for producing energy by heating the ocean surface waters
  - C. Technology for producing energy by steam made from ocean waters and then steam rotates the turbine
  - D. Technology for producing energy by temperature differences between ocean surface waters and deep ocean waters

Question ID : 9277591858  
Status : Answered  
Chosen Option : B

Q.20 Which type of analysis is NOT done by MATLAB software?

- Ans
- A. Numerical computing
  - B. Algebraic solutions
  - C. Plant planning analysis
  - D. Dynamic system simulations

Question ID : 9277591839  
Status : Answered  
Chosen Option : C

**AEC PLUS**  
POWERED BY  
Advance Engineering Classes

Q.21 The highest AC voltage transmission line in India is:

- Ans  A. 11000 kV  
 B. 765 kV  
 C. 400 kV  
 D. 800 kV

Question ID : 9277591850  
Status : Answered  
Chosen Option : B

Q.22 Which of the following is NOT a category of electrical wiring system?

- Ans  A. Cleat wiring  
 B. Conduit wiring  
 C. Clipboard wiring  
 D. Concealed wiring

Question ID : 9277591883  
Status : Answered  
Chosen Option : C

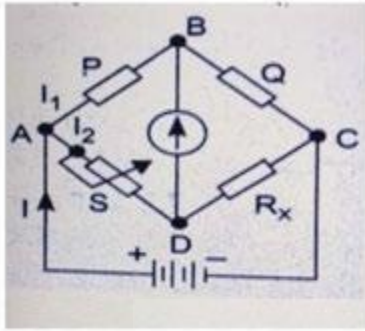
Q.23 Which of the following methods is used for measuring the resistivity of good conductors?

- Ans  A. Schering bridge method  
 B. Wien's bridge method  
 C. Loss of charge method  
 D. Kelvin double bridge method

Question ID : 9277591764  
Status : Answered  
Chosen Option : D

**AEC PLUS**  
POWERED BY  
Advance Engineering Classes

Q.24 The Wheatstone bridge balance condition is shown in the figure. Find the value of  $R_x$ , if  $P = 900 \Omega$ ,  $Q = 300 \Omega$  and  $S = 15 \Omega$ .



- Ans
- A.  $6 \Omega$
  - B.  $14 \Omega$
  - C.  $5 \Omega$
  - D.  $30 \Omega$

Question ID : 9277591794  
 Status : Answered  
 Chosen Option : C

Q.25 Which of the following is used to analyse and visualise the data in MATLAB?

- Ans
- A. Pspice
  - B. Power World Simulator
  - C. Simulink
  - D. PCAD

Question ID : 9277591840  
 Status : Answered  
 Chosen Option : B



Q.26 Which of the following is NOT an advantage of SCR as a switch?

- Ans  A. The switching speed is very high.  
 B. The operation does not produce harmonics.  
 C. It gives noiseless operation at high efficiency.  
 D. It has no moving parts.

Question ID : 9277591805  
Status : Answered  
Chosen Option : B

Q.27 Which of the following are NOT transmission line elements?

- Ans  A. Distribution poles  
 B. Voltage regulators  
 C. Protective devices  
 D. Line insulators

Question ID : 9277591854  
Status : Answered  
Chosen Option : A

Q.28 Which of the following protects buildings, machinery and appliances under fault conditions?

- Ans  A. MCT  
 B. Earthing  
 C. Fuse holder  
 D. Dielectric material

Question ID : 9277591880  
Status : Answered  
Chosen Option : A

AEC PLUS  
POWERED BY  
Advance Engineering Classes

Q.29 Which command is used for creating rectangles in AutoCAD?

- Ans
- A. Sgur
  - B. REC
  - C. RET
  - D. ISO

Question ID : 9277591846  
Status : Answered  
Chosen Option : C

Q.30 Which type of solar cell gives the highest efficiency?

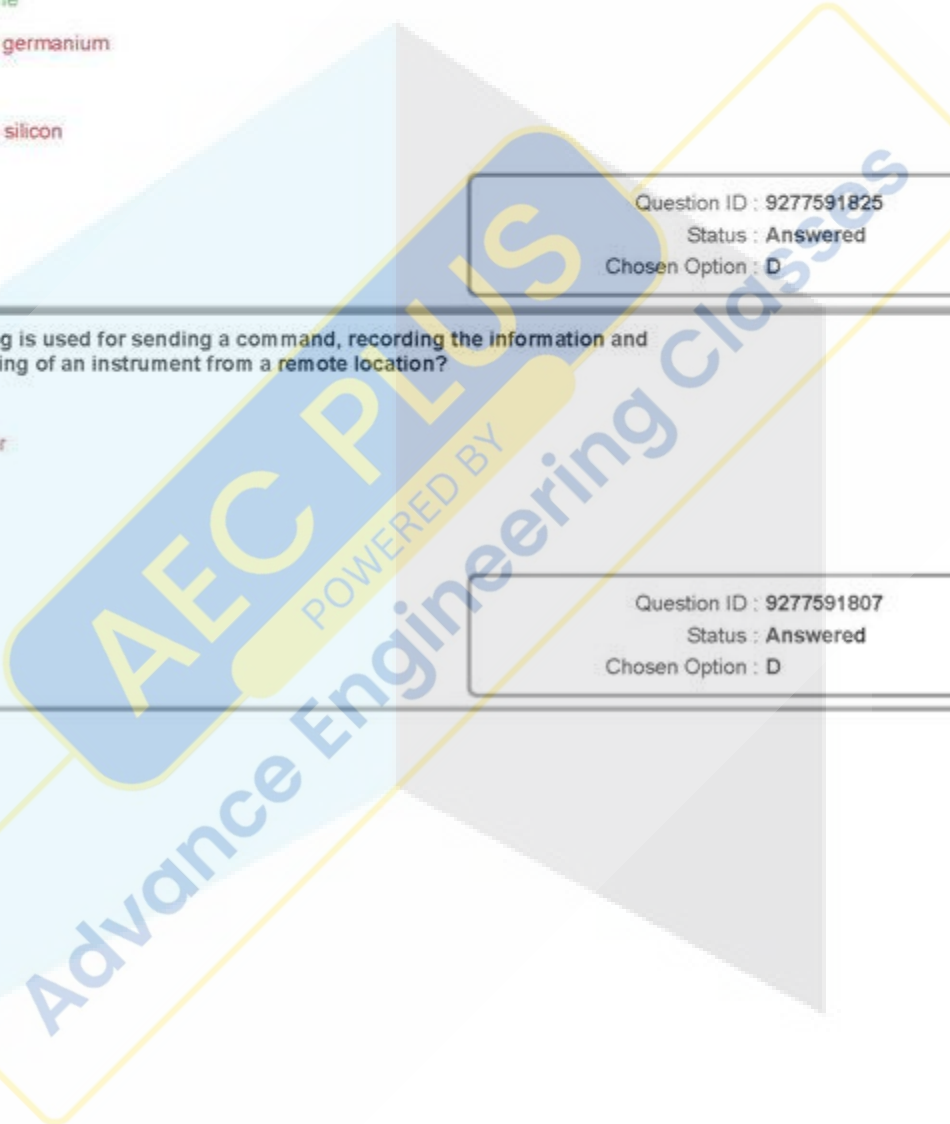
- Ans
- A. Mono crystalline
  - B. Polycrystalline germanium
  - C. Thin film
  - D. Polycrystalline silicon

Question ID : 9277591825  
Status : Answered  
Chosen Option : D

Q.31 Which of the following is used for sending a command, recording the information and transmitting the reading of an instrument from a remote location?

- Ans
- A. HDIM
  - B. Micro controller
  - C. PLC
  - D. Telemetry

Question ID : 9277591807  
Status : Answered  
Chosen Option : D





Q.32 Which is used for making ladder logic program?

- Ans
- A. Connecting lines and coils
  - B. Connecting lines with logic gate symbol
  - C. Virtual relay type contacts and coils
  - D. Function blocks and connecting lines

Question ID : 9277591809  
Status : Answered  
Chosen Option : B

Q.33 The electrical resistivity of very pure silver near 0 K is:

- Ans
- A. very low but measurable
  - B. not measurable
  - C. below 100 ohm/meter
  - D. very high

Question ID : 9277591755  
Status : Answered  
Chosen Option : B

Q.34 The representation of a power system using the simple symbol for each component is known as:

- Ans
- A. single line diagram
  - B. transmission circuit diagram
  - C. power symbol diagram
  - D. component diagram

Question ID : 9277591851  
Status : Answered  
Chosen Option : A

AEC PLUS  
POWERED BY  
Advance Engineering Classes

Q.35 Which component is NOT required in conversion of wind energy to electrical DC supply?

- Ans
- A. Generator
  - B. Wind turbine
  - C. DC load
  - D. Charge controller

Question ID : 9277591863  
 Status : Answered  
 Chosen Option : C

Q.36 Which of the following types of materials lacks permanent magnetic dipoles?

- Ans
- A. Fully magnetic
  - B. Semi magnetic
  - C. Ferromagnetic
  - D. Diamagnetic

Question ID : 9277591765  
 Status : Answered  
 Chosen Option : D

Q.37 मॉडल उद्यमी की सफलता के निर्माण खंडों (building blocks) में से किसी एक के रूप में निम्न में से किस कारक के बारे में विचार नहीं किया जाता है?

- Ans
- A. जोखिम-सहिष्णुता (Risk-Tolerance)
  - B. दूरदर्शी (Visionary)
  - C. व्यावसायिक जागरूकता (Business awareness)
  - D. नवोन्मेष (Innovation)

Question ID : 9277591830  
 Status : Answered  
 Chosen Option : D





Q.38 Which property is related to arc welding transformer?

- Ans  A. Low voltage, high current  
 B. Low voltage, low current  
 C. High voltage, low current  
 D. High voltage, high current

Question ID : 9277591892  
Status : Answered  
Chosen Option : A

Q.39 Which of the following is NOT included in routine tests of a circuit breaker?

- Ans  A. Operational tests  
 B. One minute power frequency voltage dry withstand tests  
 C. Measurement of resistance of the main circuits  
 D. Depreciation of circuit breaker

Question ID : 9277591867  
Status : Answered  
Chosen Option : A

Q.40 Which generation of entrepreneurs use EDP (Entrepreneurship Development Programmes)?

- Ans  A. Last generation entrepreneurs  
 B. First generation entrepreneurs  
 C. Mix generation entrepreneurs  
 D. Future generation entrepreneurs

Question ID : 9277591826  
Status : Answered  
Chosen Option : C



Q.41 What is the full form of LOB?

- Ans
- A. Lift of Burden
  - B. Line of Balance
  - C. Line of Business
  - D. Loss of Business

Question ID : 9277591832  
Status : Answered  
Chosen Option : D

Q.42 The equation 'Assets = Liabilities + Equity' is related to:

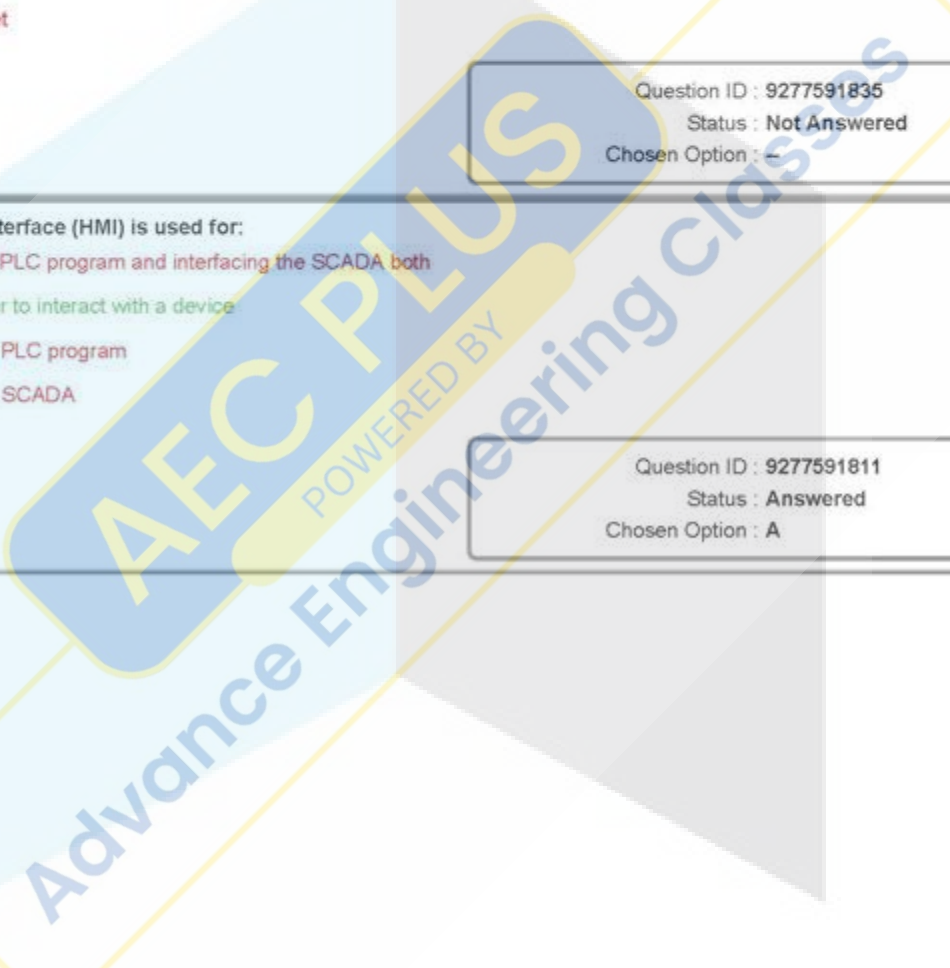
- Ans
- A. credited sheet
  - B. expenses sheet
  - C. balance sheet
  - D. revenues sheet

Question ID : 9277591835  
Status : Not Answered  
Chosen Option : -

Q.43 A Human-Machine Interface (HMI) is used for:

- Ans
- A. controlling the PLC program and interfacing the SCADA both
  - B. allowing a user to interact with a device
  - C. controlling the PLC program
  - D. interfacing the SCADA

Question ID : 9277591811  
Status : Answered  
Chosen Option : A

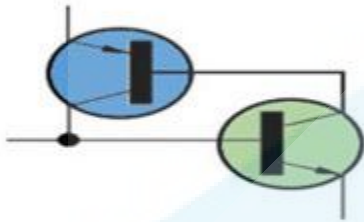


Q.44 Which of the following is NOT a track electrification system?

- Ans
- A. Three-phase AC system
  - B. Single-phase AC system
  - C. DC system
  - D. Two-phase AC system

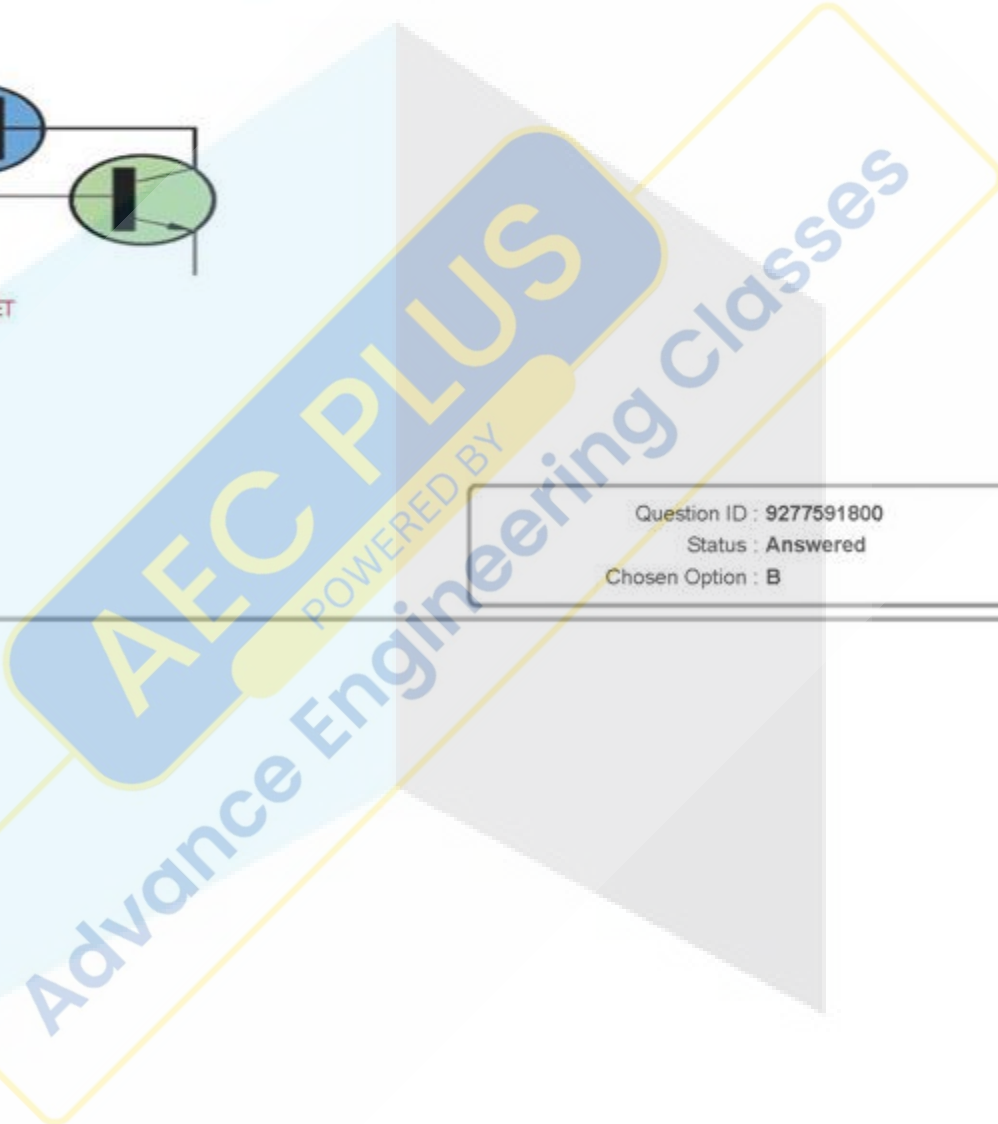
Question ID : 9277591896  
 Status : Answered  
 Chosen Option : D

Q.45 Which is the perfect analogy of two transistors shown in the given figure?



- Ans
- A. Power MOSFET
  - B. Thyristors
  - C. UJT
  - D. FET

Question ID : 9277591800  
 Status : Answered  
 Chosen Option : B



Q.46 Which plane is used to draw all objects in AutoCAD?

- Ans
- A. XZ plane
  - B. YZ plane
  - C. XY plane
  - D. ZY plane

Question ID : 9277591847  
Status : Not Answered  
Chosen Option : --

Q.47 Which of the following is NOT a thyristor type?

- Ans
- A. ETO
  - B. UJT
  - C. GTO
  - D. SCR

Question ID : 9277591801  
Status : Answered  
Chosen Option : A

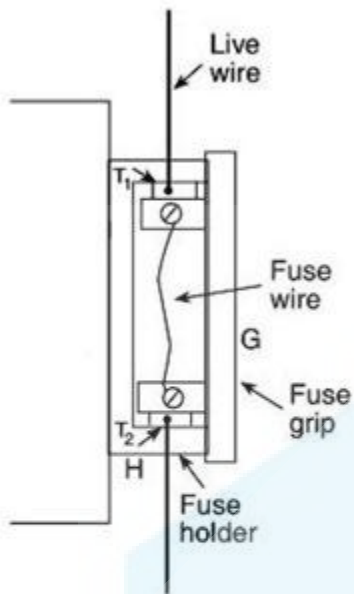
Q.48 Which of the following provides the controlling torque in case of a megger?

- Ans
- A. Voltage coil
  - B. Spring
  - C. Weight
  - D. Eddy current

Question ID : 9277591789  
Status : Answered  
Chosen Option : A

AEC PLUS  
POWERED BY  
Advance Engineering Classes

Q.49 Which type of fuse is shown in the given diagram?



- Ans
- A. Link type cartridge
  - B. HRC
  - C. Rewireable fuse
  - D. D-type cartridge fuse

Question ID : 9277591868  
 Status : Answered  
 Chosen Option : C

AEC PLUS

POWERED BY

Advance Engineering Classes



Q.50 A class of ownership that has a higher claim on assets and earnings than common stock holders is known as:

- Ans
- A. Hybrid stock holders
  - B. Debenture share holders
  - C. Preferred stock holders
  - D. Commodity holders

Question ID : 9277591833  
Status : Not Answered  
Chosen Option : --

Q.51 What happens when moisture gets into the insulating materials?

- Ans
- A. It decreases dielectric constant
  - B. It increases the insulation resistance
  - C. It increases the dielectric strength
  - D. It increases the dielectric loss

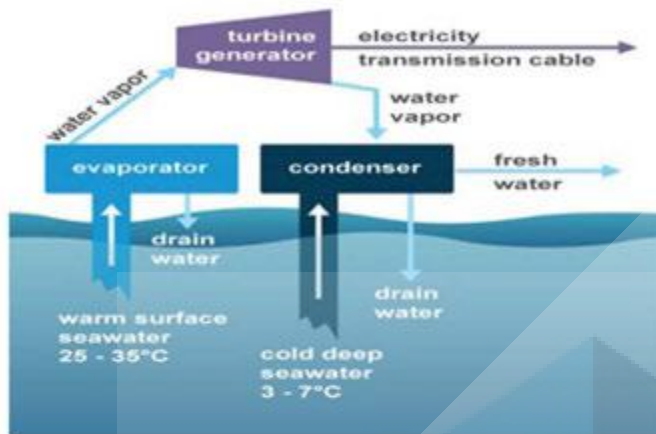
Question ID : 9277591761  
Status : Answered  
Chosen Option : A

AEC PLUS

POWERED BY

Advance Engineering classes

Q.52 Which type of energy conversion is shown in given diagram?



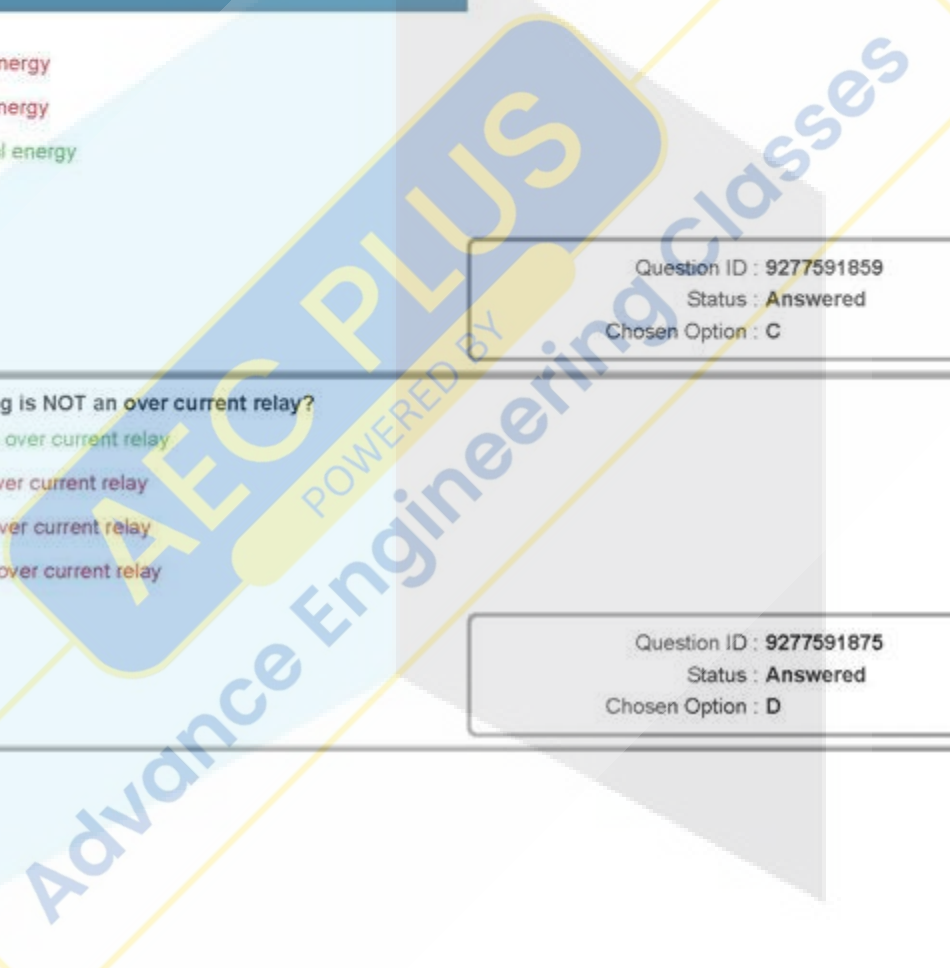
- Ans
- A. Ocean wave energy
  - B. Geo thermal energy
  - C. Ocean thermal energy
  - D. Tidal energy

Question ID : 9277591859  
 Status : Answered  
 Chosen Option : C

Q.53 Which of the following is NOT an over current relay?

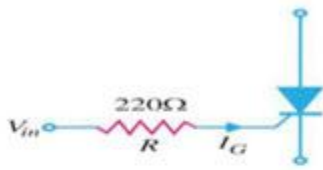
- Ans
- A. Instantaneous over current relay
  - B. Inverse time over current relay
  - C. Definite time over current relay
  - D. Closing timed over current relay

Question ID : 9277591875  
 Status : Answered  
 Chosen Option : D





- Q.54 A  $220\ \Omega$  resistor is connected in series with the gate of an SCR as shown in the given figure. The gate current required to fire the SCR is  $7\ \text{mA}$ . What is the input voltage ( $V_{in}$ ) required to fire the SCR?



- Ans  A.  $2.60\ \text{V}$   
 B.  $2.24\ \text{V}$   
 C.  $4.12\ \text{V}$   
 D.  $1.6\ \text{V}$

Question ID : 9277591806  
Status : Answered  
Chosen Option : D

- Q.55 Which of the following elements has the highest conductivity?

- Ans  A. Stainless steel  
 B. Silver  
 C. Aluminium  
 D. Copper

Question ID : 9277591760  
Status : Answered  
Chosen Option : B

Q.56 Which of the following is NOT a type of electric resistance welding?

- Ans
- A. Butt welding
  - B. Seam welding
  - C. Helium welding
  - D. Spot welding

Question ID : 9277591890  
 Status : Answered  
 Chosen Option : C

Q.57 Which method is NOT used for controlling the speed of slip ring induction motor?

- Ans
- A. Cascaded method
  - B. Changing the pole method
  - C. Slip power control method
  - D. Rotor resistance method

Question ID : 9277591782  
 Status : Answered  
 Chosen Option : B

Q.58 Pspice (पीसपाइस) सॉफ्टवेयर का पूर्ण रूप क्या है?

- Ans
- A. Power Simulation Program with Integrated Circuit in Electrical (पावर सिमुलेशन प्रोग्राम विद इंटीग्रेटेड सर्किट इन इलेक्ट्रिकल)
  - B. Personal System Program with Integrated Circuit in Electrical (पर्सनल सिस्टम प्रोग्राम विद इंटीग्रेटेड सर्किट इन इलेक्ट्रिकल)
  - C. Professional Simulation Program with Integrated Circuit Emphasis (प्रोफेशनल सिमुलेशन प्रोग्राम विद इंटीग्रेटेड सर्किट एम्फेसिस)
  - D. Personal Simulation Program with Integrated Circuit Emphasis (पर्सनल सिमुलेशन प्रोग्राम विद इंटीग्रेटेड सर्किट एम्फेसिस)

Question ID : 9277591841  
 Status : Answered  
 Chosen Option : D

Q.59 \_\_\_\_\_ has a negative temperature coefficient of resistance.

- Ans  A. Carbon  
 B. Copper  
 C. Steel  
 D. Aluminium

Question ID : 9277591757  
Status : Answered  
Chosen Option : A

Q.60 Which consideration is NOT included in the preparation of wiring?

- Ans  A. Type of conductor  
 B. Wiring manufacturer  
 C. Specifications of the wire  
 D. Colour code mentioned

Question ID : 9277591887  
Status : Answered  
Chosen Option : B

Q.61 Which type of instrument is used for measuring a very high resistance?

- Ans  A. Wien's bridge  
 B. Megger  
 C. Kelvin's single bridge  
 D. Wheatstone bridge

Question ID : 9277591788  
Status : Answered  
Chosen Option : B

AEC PLUS  
POWERED BY  
Advance Engineering Classes

Q.62 Which method is NOT used for starting the synchronous motor?

- Ans
- A. Damper winding
  - B. Small DC machine
  - C. Pony motor
  - D. Outer rolled machine

Question ID : 9277591784  
Status : Answered  
Chosen Option : D

Q.63 Which type of work is NOT performed for maintenance of a transformer?

- Ans
- A. Solving the designing errors
  - B. Leak repair / seal replacement
  - C. Corrosion and rust removal, welding work and painting work
  - D. Taking measures for extending service life

Question ID : 9277591904  
Status : Answered  
Chosen Option : A

Q.64 A circuit which is used to turn off the SCR is:

- Ans
- A. triggering circuit
  - B. electrostatic circuit
  - C. commutation
  - D. gate control circuit

Question ID : 9277591803  
Status : Answered  
Chosen Option : C

AEC PLUS  
POWERED BY  
Advance Engineering Classes

Q.65 What is the result when Uranium-235 undergoes fission by slow neutrons?

- Ans
- A. Electron energy is multiplied.
  - B. High level force is produced.
  - C. A tremendous amount of heat is released.
  - D. There is no effect.

Question ID : 9277591866  
Status : Answered  
Chosen Option : C

Q.66 PLC's analog input/output address value has:

- Ans
- A. 1 byte
  - B. 1 double word
  - C. 1 bit
  - D. 1 word

Question ID : 9277591808  
Status : Answered  
Chosen Option : D

Q.67 Which type of energy audit involves analysis of capital intensive improvements?

- Ans
- A. Walkthrough audit
  - B. Detailed audit
  - C. Benchmarking
  - D. Investment-grade audit

Question ID : 9277591882  
Status : Answered  
Chosen Option : D

AEC PLUS  
POWERED BY  
Advance Engineering Classes

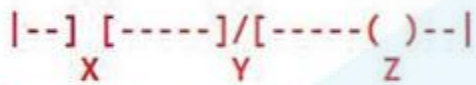


Q.68 The process of taking measures to check the quality, performance or reliability of the equipment is called:

- Ans  A. testing  
 B. inspecting  
 C. servicing  
 D. analysing

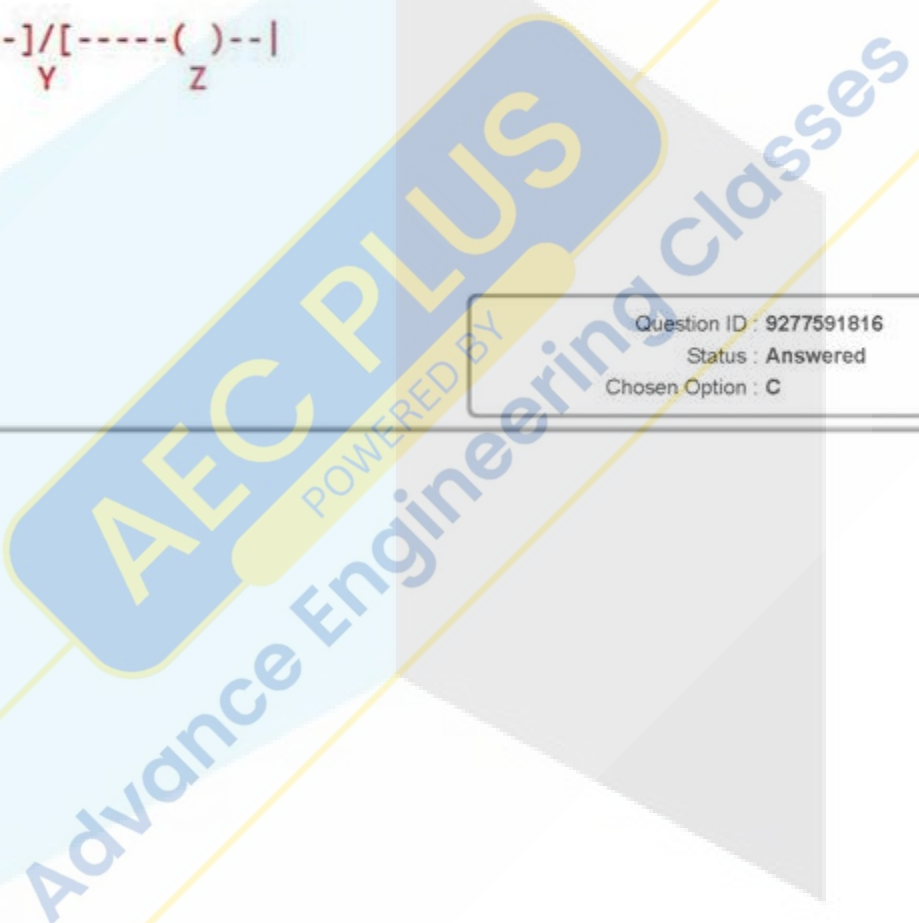
Question ID : 9277591903  
 Status : Answered  
 Chosen Option : B

Q.69 What is the correct output of Z in the given rung?



- Ans  A. X+Y=Z  
 B. X+Y=Z  
 C. X.Y=Z  
 D. X.Y=Z

Question ID : 9277591816  
 Status : Answered  
 Chosen Option : C



Q.70 What is the maximum number of inputs and outputs that are there in a small PLC?

- Ans
- A. 200
  - B. 50
  - C. 100
  - D. 500

Question ID : 9277591810  
Status : Answered  
Chosen Option : B

Q.71 For best conductivity, which type of copper is suitable?

- Ans
- A. Pure annealed copper
  - B. Silicon mix copper
  - C. Politer type of copper
  - D. Hard type of copper

Question ID : 9277591756  
Status : Answered  
Chosen Option : A

Q.72 The \_\_\_\_\_ is basically a two-terminal parallel-inverse combination of semiconductor layers that permits triggering in either direction.

- Ans
- A. Power diode
  - B. QUADRAC
  - C. TRIAC
  - D. DIAC

Question ID : 9277591796  
Status : Answered  
Chosen Option : D

AEC PLUS  
POWERED BY  
Advance Engineering Classes



Q.73 Which law states the following?

Illumination,  $E$  at any point on a surface is directly proportional to the cosine of the angle between the normal at that point and the line of flux':

- Ans
- A. Ohm's law
  - B. Lambert's cosine law
  - C. Inverse square law
  - D. Supervie's law

Question ID : 9277591894  
Status : Answered  
Chosen Option : B

Q.74 What is the use of JMP (Jump instruction paired) instruction in PLC?

- Ans
- A. Changing the program
  - B. Cascading two programs
  - C. Causing PLC to skip over rungs
  - D. Changing the instruction

Question ID : 9277591815  
Status : Answered  
Chosen Option : C

Q.75 Which of the following voltage controlled device has three terminals (Gate, Source and Drain)?

- Ans
- A. UJT
  - B. Power diode
  - C. Power MOSFET
  - D. BJT

Question ID : 9277591804  
Status : Answered  
Chosen Option : C

Q.76 The energy motor used for domestic applications comes under the category of \_\_\_\_\_ instruments.

- Ans
- A. Recording type
  - B. Integrating type
  - C. Indicating type
  - D. Non responding type

Question ID : 9277591786  
Status : Answered  
Chosen Option : B

Q.77 For a good fuse the value of the fusing factor is:

- Ans
- A. always zero
  - B. always more than 1
  - C. always less than 1
  - D. always equal to 1

Question ID : 9277591873  
Status : Answered  
Chosen Option : B

Q.78 Which process is used to produce heat in nuclear power stations?

- Ans
- A. Fission of uranium
  - B. Fusion of uranium
  - C. Neutron absorption by uranium
  - D. Internal combustion of uranium

Question ID : 9277591818  
Status : Answered  
Chosen Option : A

AEC PLUS  
POWERED BY  
Advance Engineering Classes

Q.79 Which standards are embedded in a quality management system within an organisation?

- Ans  A. ISO 35001  
 B. ISO 45000  
 C. ISO 9000  
 D. ISO ANI2

Question ID : 9277591836  
Status : Answered  
Chosen Option : C

Q.80 In a single-phase traction system, which three-phase supply is fed into the induction motor to drive a train?

- Ans  A. Termway  
 B. Kando system  
 C. Klydnogram system  
 D. Rotary converter

Question ID : 9277591897  
Status : Answered  
Chosen Option : B

Q.81 Which of the following banks is known as the first development bank of India?

- Ans  A. IDBI  
 B. IFCI  
 C. ICICI  
 D. SFC

Question ID : 9277591829  
Status : Answered  
Chosen Option : A

AEC PLUS  
POWERED BY  
Advance Engineering Classes

Q.82 The output of NOR gate is high when:

- Ans
- A. one input is low and the other input is high
  - B. one input is high and the other input is low
  - C. both inputs are low
  - D. both inputs are high

Question ID : 9277591767  
Status : Answered  
Chosen Option : C

Q.83 Which of the following is NOT an advantage of DC electric power transmission?

- Ans
- A. There is no skin effect on conductors.
  - B. Generation of power at high DC voltages is easy.
  - C. There is no problem of inductance, capacitance and phase displacement.
  - D. Voltage drop is less.

Question ID : 9277591855  
Status : Answered  
Chosen Option : B

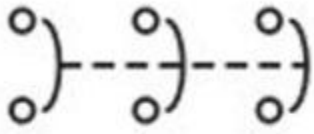
Q.84 A conductor whose resistance does NOT follow Ohm's law is called:

- Ans
- A. Bad conductor
  - B. Non conductor
  - C. Non-linear conductor
  - D. Linear conductor

Question ID : 9277591758  
Status : Answered  
Chosen Option : C

AEC PLUS  
POWERED BY  
Advance Engineering Classes

Q.85 Recognise the symbol shown in the given figure.



- Ans  A. Three pole circuit breaker  
 B. Three pole fused switch  
 C. Over load relay  
 D. Three phase magnetic motor starter

Question ID : 9277591877  
Status : Answered  
Chosen Option : A

**AEC PLUS**  
POWERED BY  
Advance Engineering Classes



Q.86 Identify the logic gates in the given symbol.

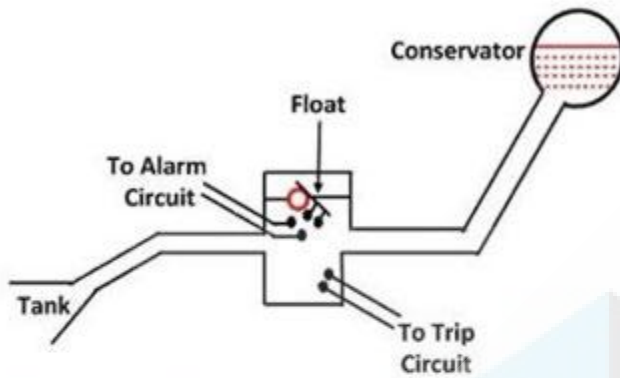


- Ans
- A. NAND
  - B. EXNOR
  - C. EXOR
  - D. NOR

Question ID : 9277591766  
Status : Answered  
Chosen Option : B

**AEC PLUS**  
POWERED BY  
Advance Engineering Classes

Q.87 Identify the relay shown in the given figure.



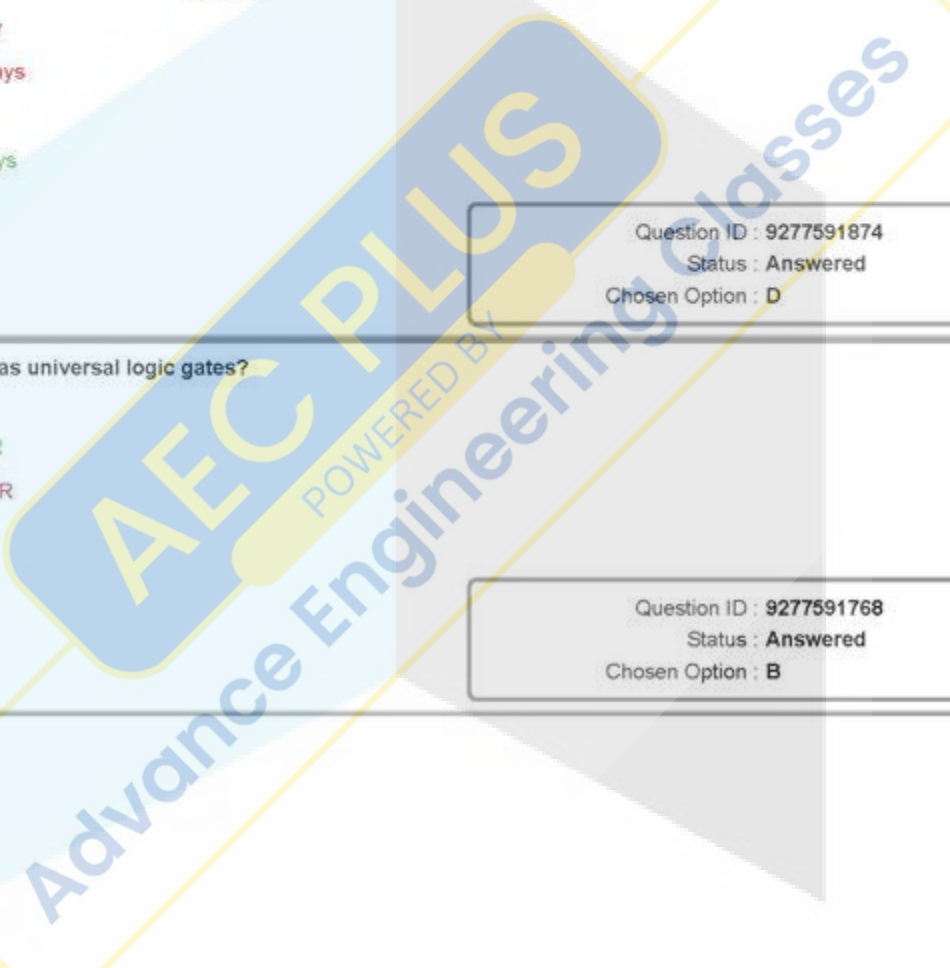
- Ans
- A. Polarized relay
  - B. Differential relays
  - C. IDMT relay
  - D. Buchholz relays

Question ID : 9277591874  
 Status : Answered  
 Chosen Option : D

Q.88 Which pair is known as universal logic gates?

- Ans
- A. NAND or OR
  - B. NAND or NOR
  - C. NAND or EXOR
  - D. AND or NOR

Question ID : 9277591768  
 Status : Answered  
 Chosen Option : B





Q.89 Which type of joint is NOT a permanent joint?

- Ans  A. Joint by welding  
 B. Joint by press fit  
 C. Joint by shouldering  
 D. Joint by Rivets

Question ID : 9277591891  
Status : Answered  
Chosen Option : D

Q.90 Which of the following is useful in the measurement of a live-conductor without damaging / powering down the circuit?

- Ans  A. Earth tester  
 B. Ammeter  
 C. Multimeter  
 D. Tong tester

Question ID : 9277591900  
Status : Answered  
Chosen Option : D

Q.91 Which process completes the work of removing the dust, dirt and other unwanted impurities from electrical equipment?

- Ans  A. Linking  
 B. Cleaning  
 C. Brightening  
 D. Changing

Question ID : 9277591898  
Status : Answered  
Chosen Option : B

AEC PLUS  
POWERED BY  
Advance Engineering Classes

Q.92 Which of the following appears across the circuit breaker contacts immediately after the arc interruption at current zero?

- Ans  A. Surge voltage  
 B. Recovery voltage  
 C. Hazard voltage  
 D. Peak voltage

Question ID : 9277591871  
Status : Answered  
Chosen Option : A

Q.93 Which relay is suitable for long transmission line for protection of high power surges?

- Ans  A. Impedance relay  
 B. Reactance relay  
 C. MHO relay  
 D. Volts current relay

Question ID : 9277591872  
Status : Answered  
Chosen Option : C

Q.94 Arrange the following in the correct order of steps in the project management life-cycle.

1. Design,
2. Marketing,
3. Analysis and evaluation
4. Inspection, testing and delivery

- Ans  A. 3, 2, 1, 4  
 B. 2, 3, 1, 4  
 C. 4, 3, 2, 1  
 D. 1, 2, 3, 4

Question ID : 9277591837  
Status : Not Answered  
Chosen Option : --

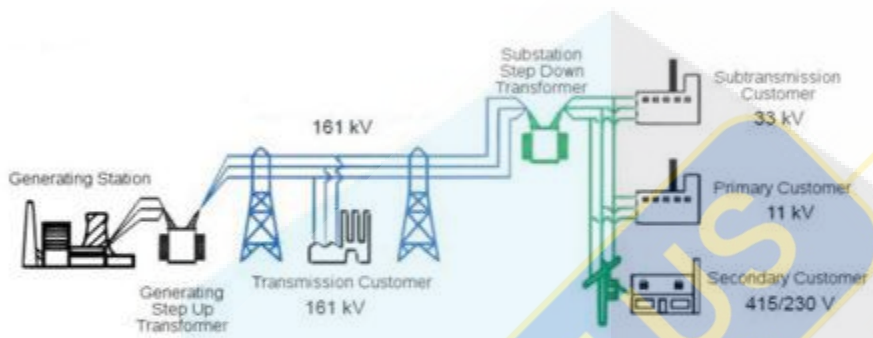
AEC PLUS  
POWERED BY  
Advance Engineering Classes

Q.95 Which of the following power plants will have the lowest operating cost?

- Ans  A. Nuclear power plant  
 B. Photovoltaic Solar plant  
 C. Coal-fired combustion turbine plant  
 D. Natural gas combined-cycle plant

Question ID : 9277591820  
 Status : Answered  
 Chosen Option : B

Q.96 Which type of colour key is known as a transmission line in the given diagram?



- Ans  A. Blue  
 B. Green  
 C. White  
 D. Black

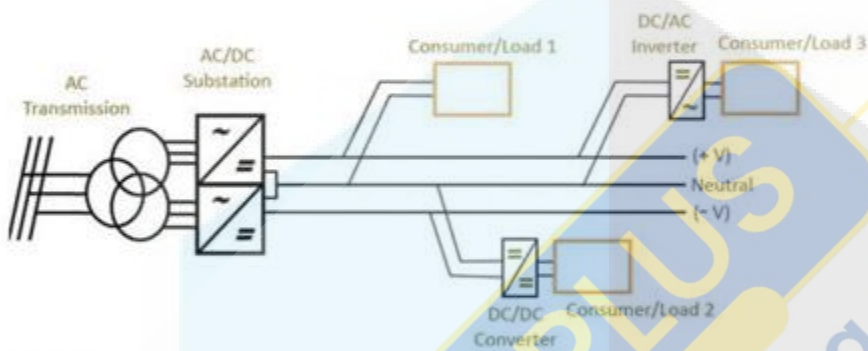
Question ID : 9277591849  
 Status : Answered  
 Chosen Option : A

Q.97 Which of the following is an example of the conversion of heat energy to mechanical energy?

- Ans  A. Steam engine  
 B. Piezoelectric  
 C. Photosynthesis in plants  
 D. Geothermal power plant

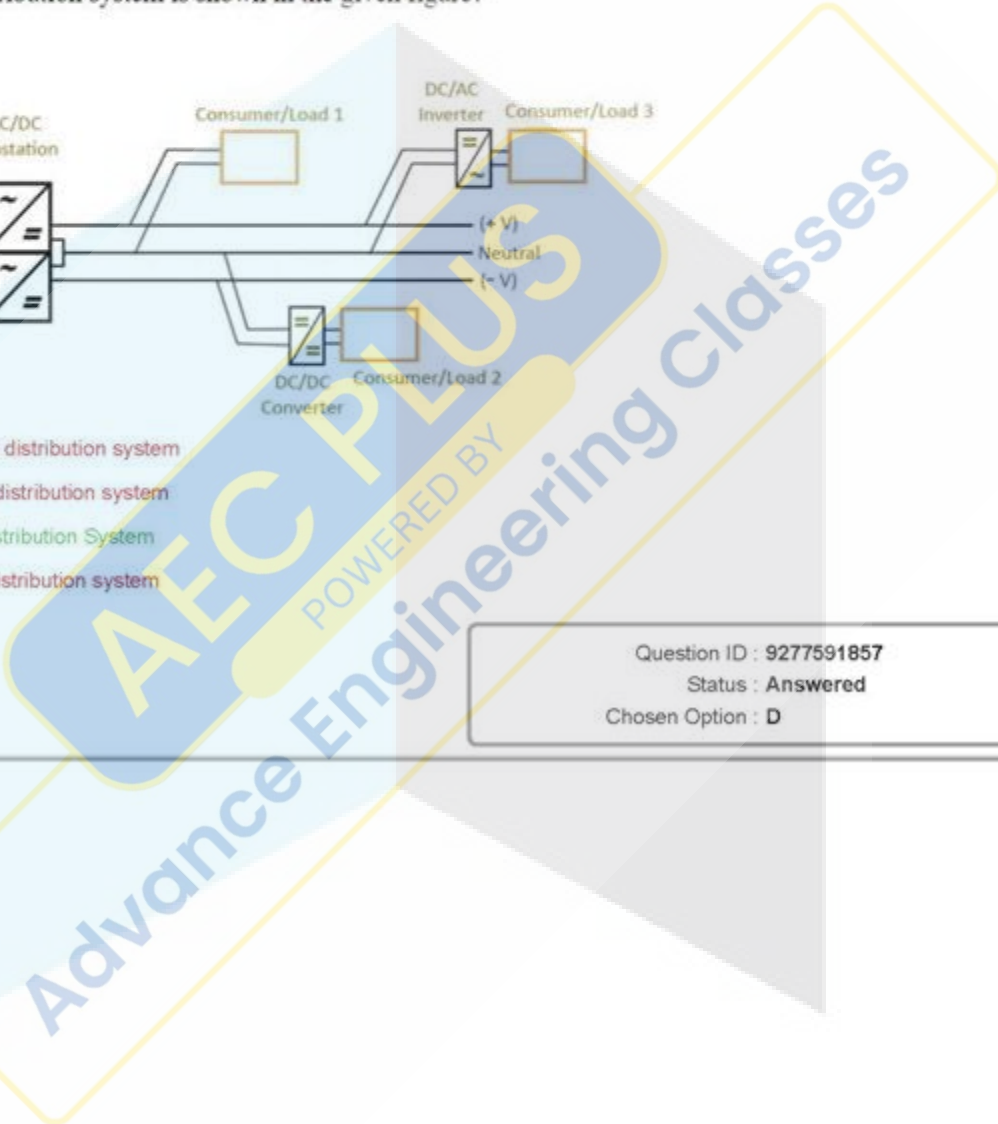
Question ID : 9277591864  
 Status : Answered  
 Chosen Option : A

Q.98 Which type of distribution system is shown in the given figure?



- Ans  A. Three-wire AC distribution system  
 B. Ring type DC distribution system  
 C. Bipolar DC distribution System  
 D. Unipolar DC distribution system

Question ID : 9277591857  
 Status : Answered  
 Chosen Option : D



Q.99 Which type of material has highest dielectric strength?

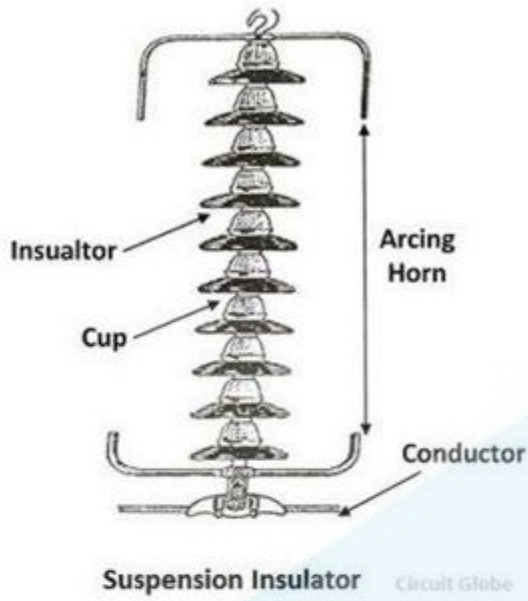
- Ans
- A. Glass
  - B. Soft rubber
  - C. Porcelain
  - D. Polystyrene

Question ID : 9277591759  
Status : Answered  
Chosen Option : D



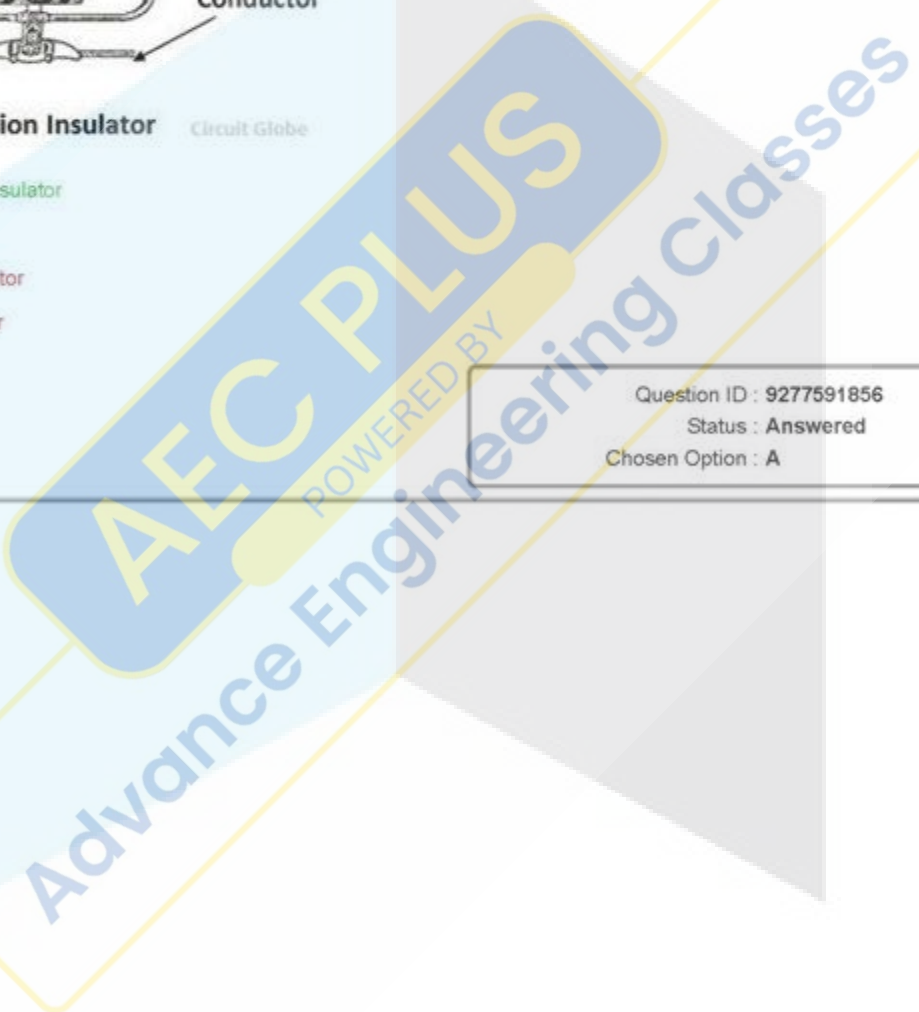


Q.100 Which type of insulator is shown in the given figure?



- Ans  A. Suspension insulator  
 B. Pin insulator  
 C. Shackle insulator  
 D. Strain insulator

Question ID : 9277591856  
 Status : Answered  
 Chosen Option : A



Q.101 Which option is the correct formula to calculate/define illumination?

Ans

A.  $\frac{(CP \times E)}{\text{flux}}$

B.  $\frac{(\text{Luminous flux})^2}{\text{area}}$

C.  $\frac{(CP \times \omega)}{\text{area}}$

D.  $\frac{(CP \times \omega)}{\text{flux}}$

Question ID : 9277591895

Status : Answered

Chosen Option : C

Q.102 Which of the following is used for turning ON DIAC?

Ans

A. High voltage on anode

B. Break over voltage

C. Gate voltage

D. Gate current

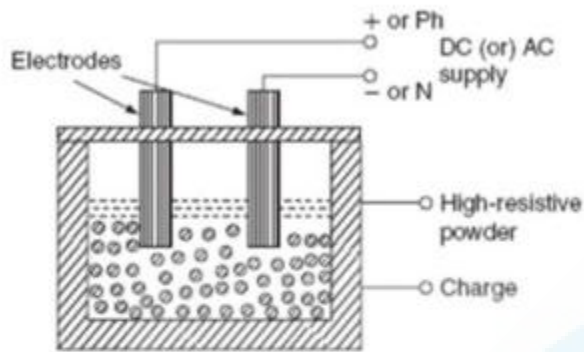
Question ID : 9277591799

Status : Answered

Chosen Option : B

AEC PLUS  
POWERED BY  
Advance Engineering Classes

Q.103 Recognise the heating type shown in the given figure.



- Ans
- A. Direct induction heating
  - B. Indirect resistance heating
  - C. Indirect arc heating
  - D. Direct resistance heating

Question ID : 9277591888  
 Status : Answered  
 Chosen Option : D

Q.104 Which type of repairing step is considered mechanical or electrical imbalances in DC motor?

- Ans
- A. Visual inspection
  - B. Lubrication test
  - C. Noise and vibration inspections
  - D. Reviewing the service history

Question ID : 9277591901  
 Status : Answered  
 Chosen Option : A

Q.105 Which type of test is NOT included in DC motor maintenance and repair?

- Ans
- A. Load test of motor
  - B. Reviewing the service history
  - C. Brush and commutator maintenance
  - D. Bearings and lubrication

Question ID : 9277591902  
Status : Answered  
Chosen Option : B

Q.106 Which function is NOT provided by the MATLAB Mathematical Function Library?

- Ans
- A. Bessel functions
  - B. Matrix eigenvalues
  - C. Fourier transforms
  - D. Line diagram

Question ID : 9277591844  
Status : Answered  
Chosen Option : C

Q.107 यदि इनपुट P, Q और R हैं, तो पूर्ण योजक (full adder) में, सम (sum) का आउटपुट व्यंजक ज्ञात करें।

- Ans
- A.  $P \text{ OR } Q \text{ OR } R$
  - B.  $P \text{ XOR } Q \text{ XOR } R$
  - C.  $P \text{ OR } Q \text{ AND } R$
  - D.  $P \text{ AND } Q \text{ AND } R$

Question ID : 9277591773  
Status : Answered  
Chosen Option : B

Q.108 कैंडल पावर (candle power) द्वारा उत्सर्जित ज्योति फ्लक्स (luminous flux) कितना होता है?

- Ans
- A.  $4\omega$
  - B.  $4\pi$
  - C.  $(5/3)\omega$
  - D.  $(5/3)\pi$

Question ID : 9277591893  
Status : Answered  
Chosen Option : B

Q.109 Which property is NOT considered in latches?

- Ans
- A. Output of the latches changes as we change the input.
  - B. Latches are level triggered.
  - C. Latches are edge triggered.
  - D. Latches are fast.

Question ID : 9277591772  
Status : Not Attempted and  
Marked For Review  
Chosen Option : --

Q.110 Solar array is a:

- Ans
- A. cascade connected solar plant
  - B. combination of solar panel with inverter
  - C. series and parallel combination of solar cells
  - D. parallel combination of solar plant with another plant

Question ID : 9277591823  
Status : Answered  
Chosen Option : C

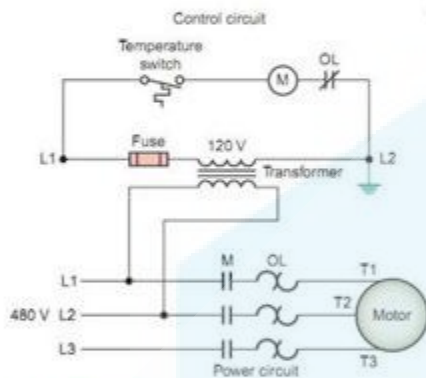


Q.111 Which type of relay works by remotely closing but CANNOT remotely reclose the breaker?

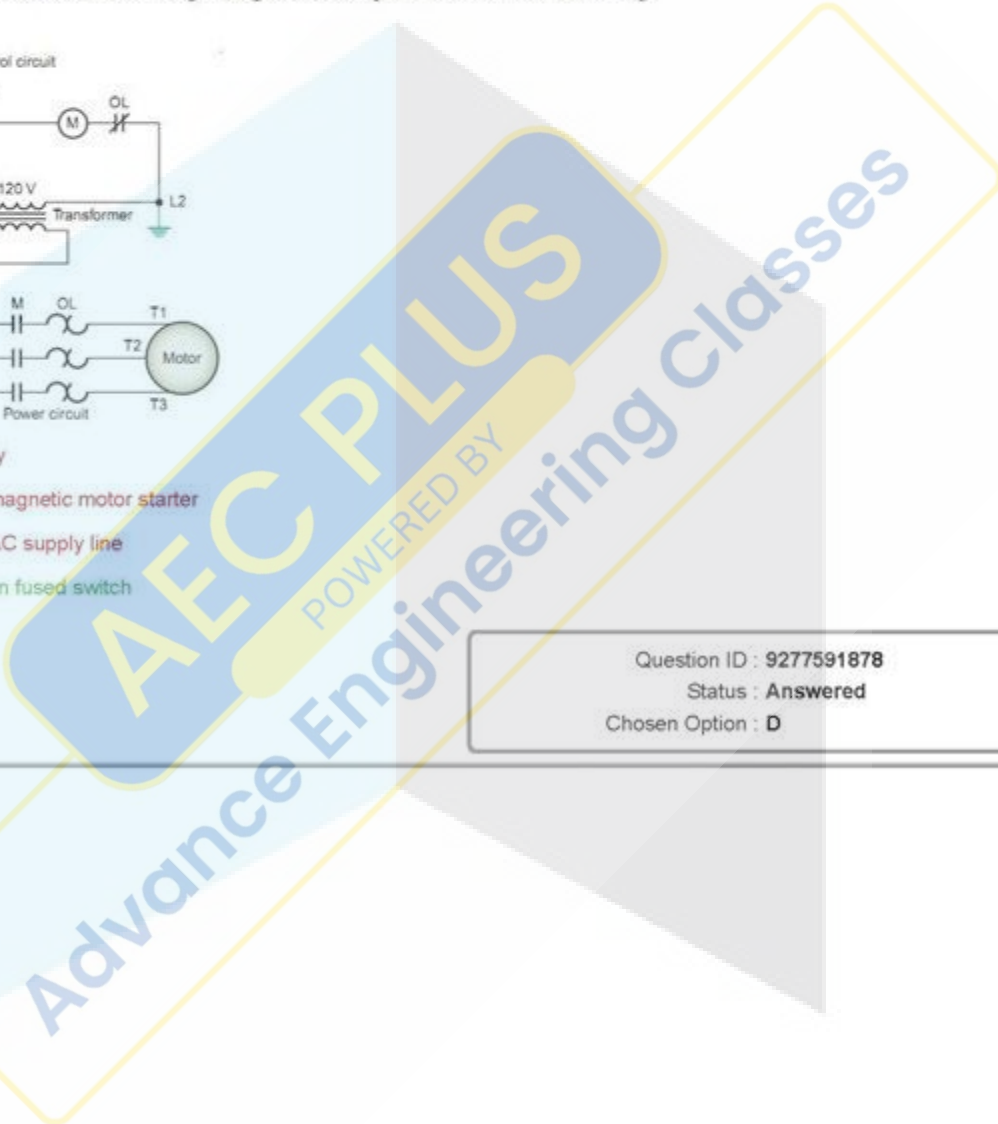
- Ans
- A. Capacitor start relay
  - B. Shunt trip magnetic relay
  - C. Series trip magnetic relay
  - D. Series trip electrostatic relay

Question ID : 9277591870  
 Status : Not Answered  
 Chosen Option : --

Q.112 Which component symbol is NOT used in the given figure of motor power and control circuit wiring?



- Ans
- A. Over load relay
  - B. Three phase magnetic motor starter
  - C. Three phase AC supply line
  - D. Three pole non fused switch



Question ID : 9277591878  
 Status : Answered  
 Chosen Option : D

Q.113 The Sun-radiated solar energy on the surface of Earth on a normal sunny day is approximately:

- Ans
- A.  $1320 \text{ W/m}^2$
  - B.  $100 \text{ W/m}^2$
  - C.  $1500 \text{ W/m}^2$
  - D.  $1 \text{ kW/m}^2$

Question ID : 9277591817  
Status : Answered  
Chosen Option : A

Q.114 Which device converts the chemical energy to electrical energy?

- Ans
- A. Electrical generator
  - B. Fuel cell
  - C. Nuclear power plant
  - D. Thermocouple

Question ID : 9277591861  
Status : Answered  
Chosen Option : B

Q.115 Which is the last stage of the product planning and development process?

- Ans
- A. Product development
  - B. Commercialisation
  - C. Concept stage
  - D. Marketing

Question ID : 9277591828  
Status : Not Answered  
Chosen Option : --

AEC PLUS  
POWERED BY  
Advance Engineering Classes

Q.116 Which of the following steps is not included in preventive maintenance of electrical machine?

- Ans  A. Planning  
 B. Measurement  
 C. Evaluation  
 D. Testing

Question ID : 9277591899  
Status : Answered  
Chosen Option : A

Q.117 Which power plant will have the highest operating life?

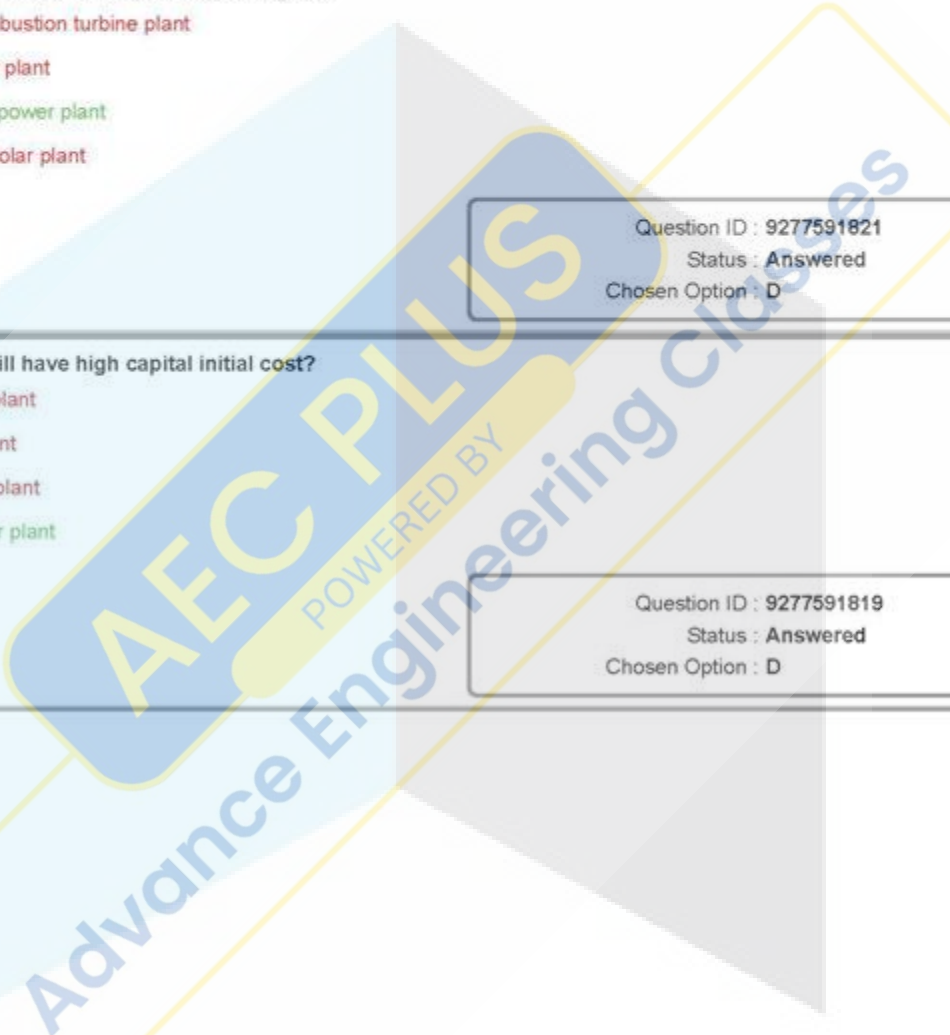
- Ans  A. Coal-fired combustion turbine plant  
 B. Nuclear power plant  
 C. Hydroelectric power plant  
 D. Photovoltaic Solar plant

Question ID : 9277591821  
Status : Answered  
Chosen Option : D

Q.118 Which power plant will have high capital initial cost?

- Ans  A. Diesel power plant  
 B. Gas power plant  
 C. Steam power plant  
 D. Nuclear power plant

Question ID : 9277591819  
Status : Answered  
Chosen Option : D

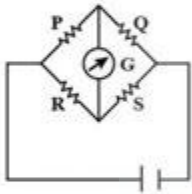


Q.119 Which channel is preferred for providing goods or services to the marketplace?

- Ans  A. Monopolies in market  
 B. Marketing channels  
 C. Multilevel hierarchy  
 D. Multiplication through team

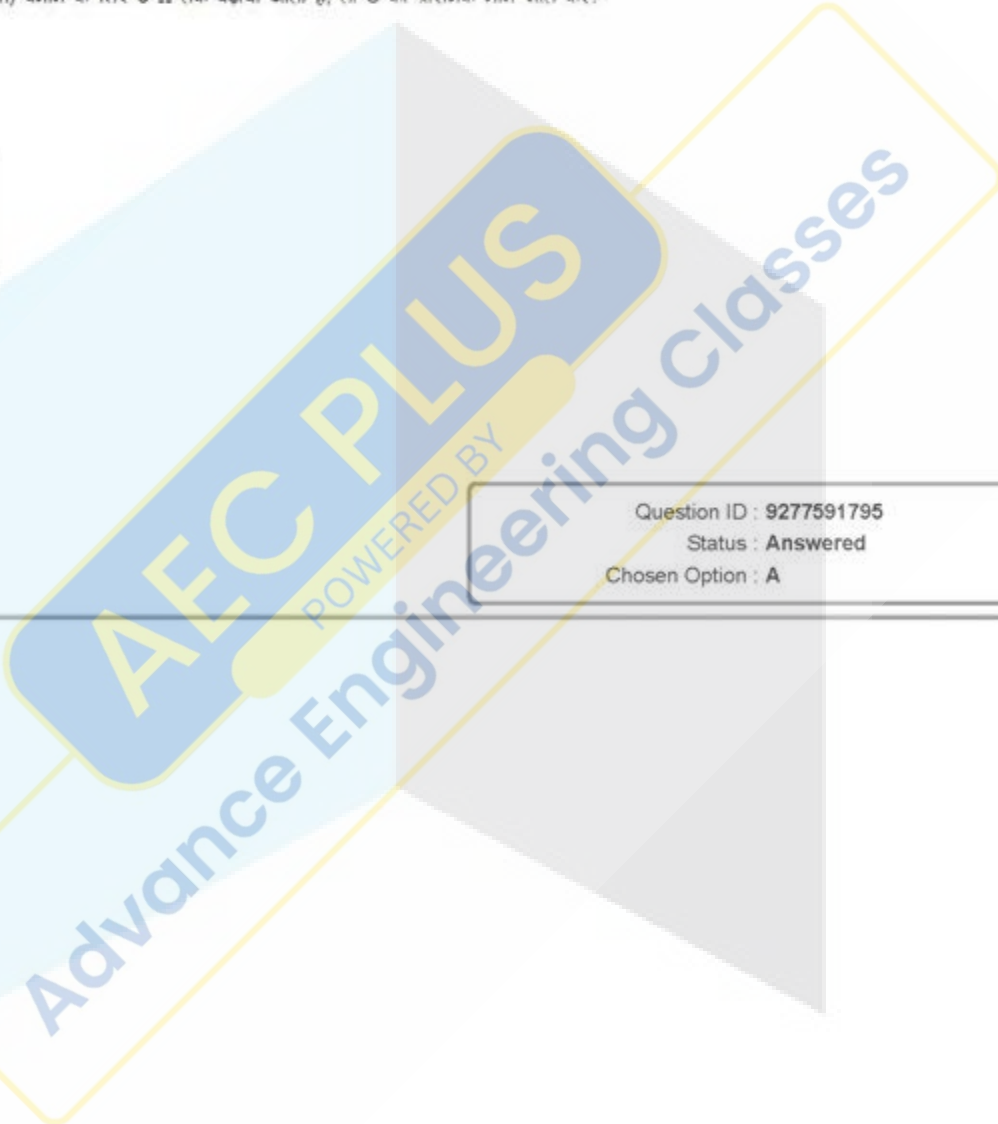
Question ID : 9277591831  
 Status : Not Answered  
 Chosen Option : --

Q.120 निम्नांकित आकृति में, यदि R को  $10\ \Omega$  से  $20\ \Omega$  तक बढ़ाया जाता है और S को वहीटस्टोन ब्रिज में संतुलन की स्थिति (balance condition) बनाने के लिए  $5\ \Omega$  तक बढ़ाया जाता है, तो S का प्रारंभिक मान ज्ञात करें?



- Ans  A.  $5\ \Omega$   
 B.  $6\ \Omega$   
 C.  $14\ \Omega$   
 D.  $3.5\ \Omega$

Question ID : 9277591795  
 Status : Answered  
 Chosen Option : A



Q.121 Which type of distribution system has high efficiency and is economical for the same amount of power?

- Ans
- A. Two-wire AC system
  - B. Four-wire three-phase system
  - C. Two-phase AC system
  - D. Three-wire three-phase system

Question ID : 9277591848  
 Status : Answered  
 Chosen Option : D

Q.122 Find the correct option for simplification of the Boolean expression.

$$(P+Q+R)(S+T)' + (P+Q+R)(S+T).$$

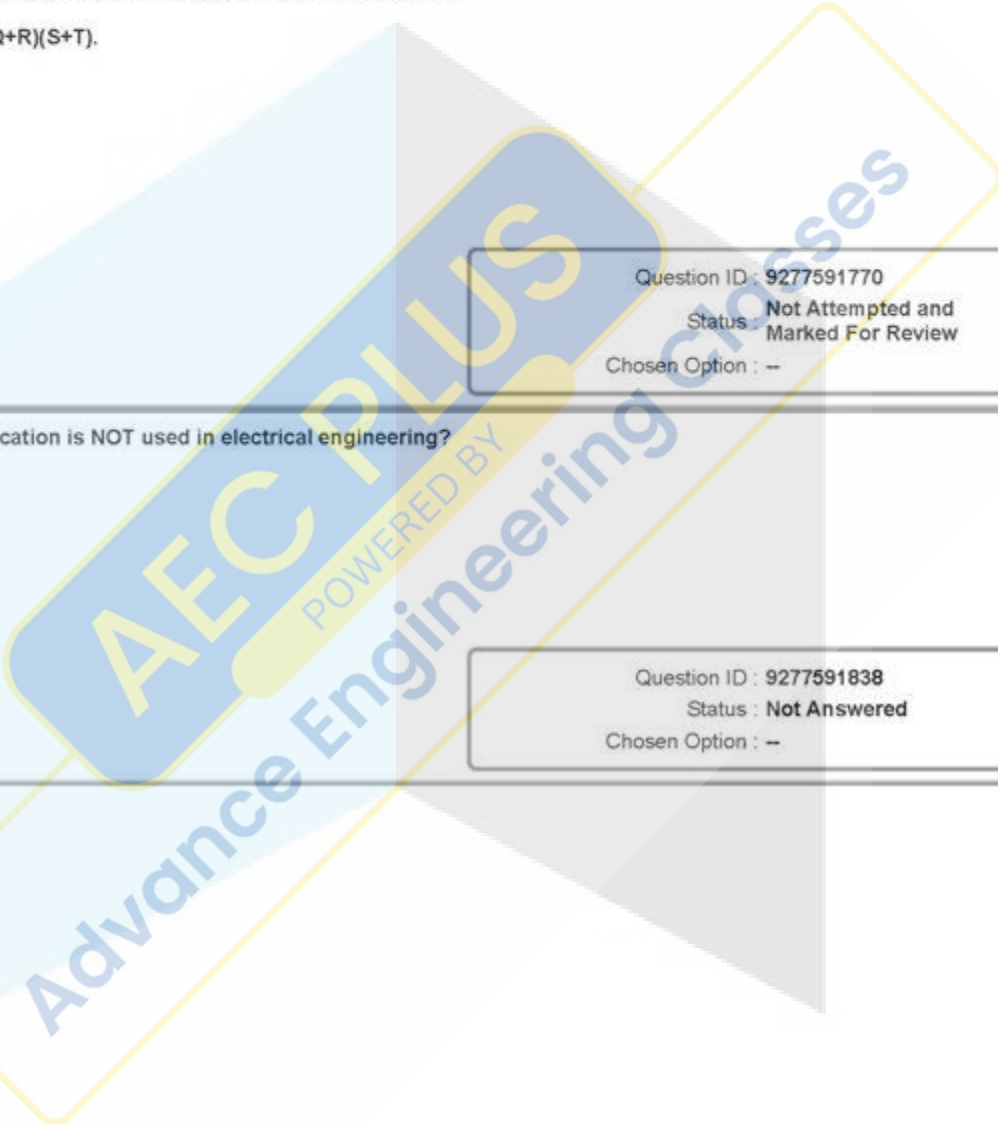
- Ans
- A. P' Q' R'
  - B. S+T
  - C. P+Q+R
  - D. S'+T'

Question ID : 9277591770  
 Status : Not Attempted and Marked For Review  
 Chosen Option : --

Q.123 Which software application is NOT used in electrical engineering?

- Ans
- A. Pspice
  - B. ETAP
  - C. Pack Power
  - D. MATLAB

Question ID : 9277591838  
 Status : Not Answered  
 Chosen Option : --





Q.124 What change can be made in the moving coil permanent magnet motor that works as a flux meter?

- Ans
- A. Using control springs with large moment of inertia
  - B. Using a series connected to a high resistance
  - C. Using shunt connected to a low resistance
  - D. Eliminating the control springs

Question ID : 9277591793

Status : Not Attempted and Marked For Review

Chosen Option : --

Q.125 In a PLC, online programming means a program which:

- Ans
- A. resides in the PC or laptop
  - B. resides in the PLC
  - C. resides on the internet server
  - D. works through internet connectivity

Question ID : 9277591812

Status : Not Answered

Chosen Option : --

Q.126 Manganin type of material is suitable for making:

- Ans
- A. standard resistance
  - B. variable resistance
  - C. losses resistance
  - D. constant resistance

Question ID : 9277591790

Status : Answered

Chosen Option : A

AEC PLUS  
POWERED BY  
Advance Engineering Classes

Q.127 Which of the following is used for alternating current measurement?

- Ans
- A. Permanent magnet type ammeter
  - B. Electrostatic ammeter
  - C. Moving iron repulsion type voltmeter
  - D. Induction ammeter

Question ID : 9277591792  
Status : Answered  
Chosen Option : D

Q.128 Which of the following properties is NOT related to carbon electrodes in arc furnaces?

- Ans
- A. Low melting point
  - B. Inertness
  - C. Insolubility
  - D. Resistance to thermal shock

Question ID : 9277591899  
Status : Answered  
Chosen Option : A

Q.129 Three mutual conversions of energy forms occur at nuclear power plants. They are:

- Ans
- A. nuclear to thermal to heat to electric energy
  - B. chemical to nuclear to mechanical to electric energy
  - C. nuclear to thermal to mechanical to electric energy
  - D. nuclear to chemical to mechanical to electric energy

Question ID : 9277591865  
Status : Answered  
Chosen Option : C

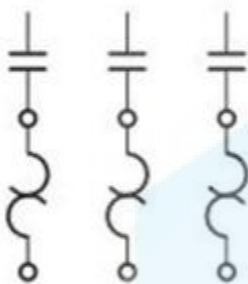
AEC PLUS  
POWERED BY  
Advance Engineering Classes

Q.130 Which software is open source and is used as an analog electronic simulator?

- Ans
- A. C++
  - B. PROTUES
  - C. Ngspice
  - D. MATLAB

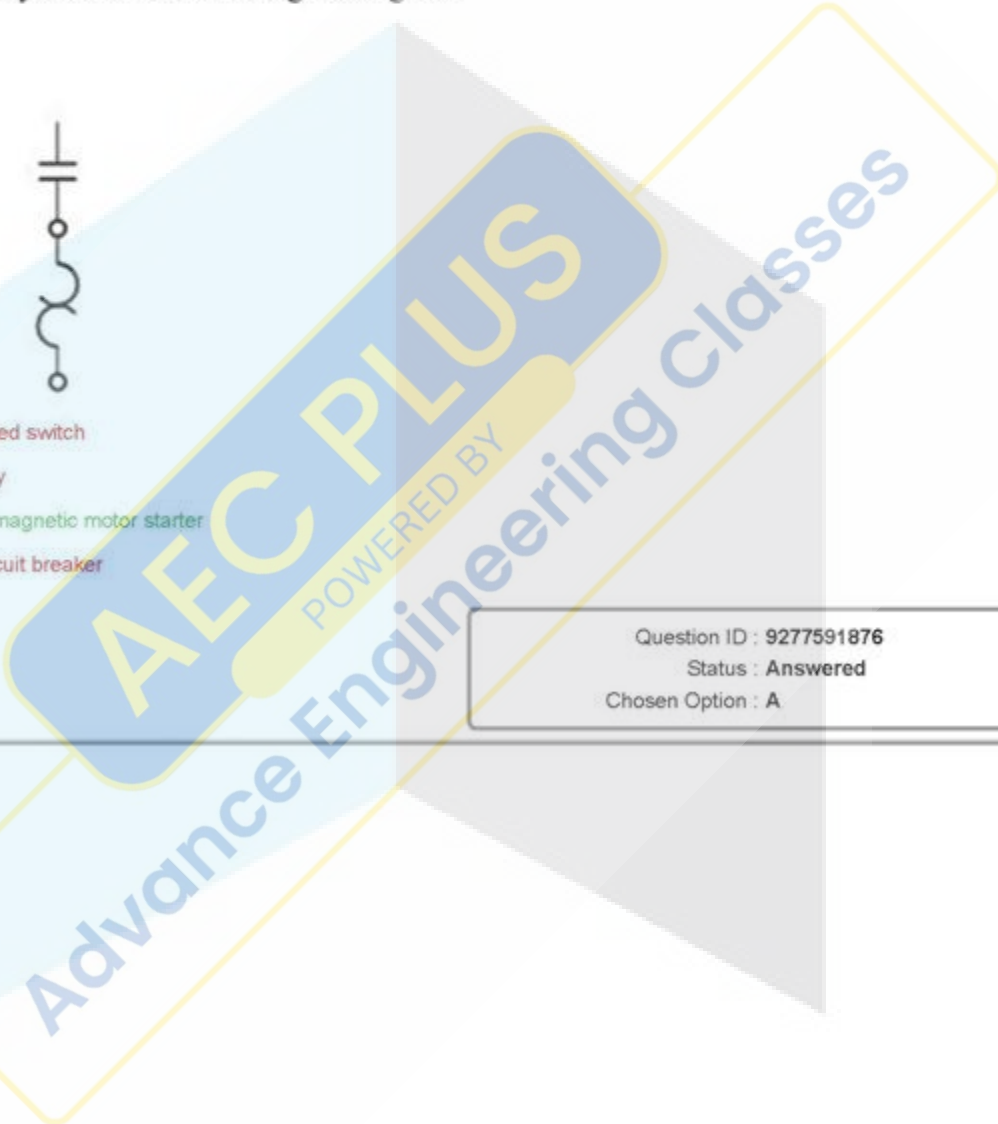
Question ID : 9277591843  
 Status : Not Answered  
 Chosen Option : --

Q.131 Recognise the symbol shown in the given figure.



- Ans
- A. Three pole fused switch
  - B. Over load relay
  - C. Three phase magnetic motor starter
  - D. Three pole circuit breaker

Question ID : 9277591876  
 Status : Answered  
 Chosen Option : A



Q.132 Linear induction motor is used in:

- Ans  A. textile mills  
 B. magnetic attraction  
 C. traction  
 D. mechanical workshop

Question ID : 9277591781  
Status : Answered  
Chosen Option : C

Q.133 What is the name of the control mechanism in which output has no influence on input?

- Ans  A. Temperature control system  
 B. Feedback system  
 C. Closed loop control system  
 D. Open loop control system

Question ID : 9277591802  
Status : Answered  
Chosen Option : D

Q.134 Which of the following parts is NOT connected in a DC machine?

- Ans  A. Armature  
 B. Damper windings  
 C. Commutator  
 D. Carbon brushes

Question ID : 9277591776  
Status : Answered  
Chosen Option : B

AEC PLUS  
POWERED BY  
Advance Engineering Classes

Q.135 Which of the following statements does NOT describe tidal energy?

- Ans  A. It is the kinetic energy from the natural rise and fall of tides.  
 B. It is a form of renewable energy.  
 C. It is the energy derived from heating the ocean surface waters.  
 D. It is obtained due to alternating sea levels.

Question ID : 9277591860  
Status : Answered  
Chosen Option : C

Q.136 A 300 V of separately excited dc generator is run at rated speed without excitation, terminal voltage on no load condition will be:

- Ans  A. Zero  
 B. Very low 2 to 3 V  
 C. 300 V  
 D. Half voltage 150 V

Question ID : 9277591778  
Status : Answered  
Chosen Option : A

Q.137 In which type of application are carbon electrodes NOT used?

- Ans  A. Cinema projectors  
 B. GLS lamps  
 C. Dry cells  
 D. Electrical arc furnace

Question ID : 9277591762  
Status : Answered  
Chosen Option : B

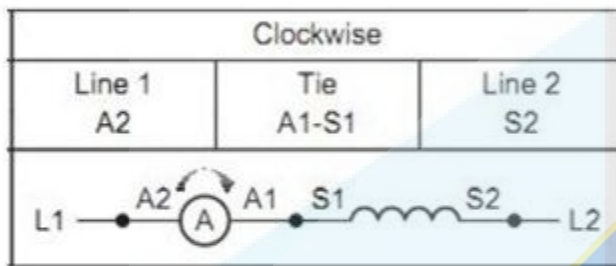


Q.138 Which of the following is NOT a design of substations?

- Ans  A. Outdoor  
 B. Broad  
 C. Pole mounted  
 D. Indoor

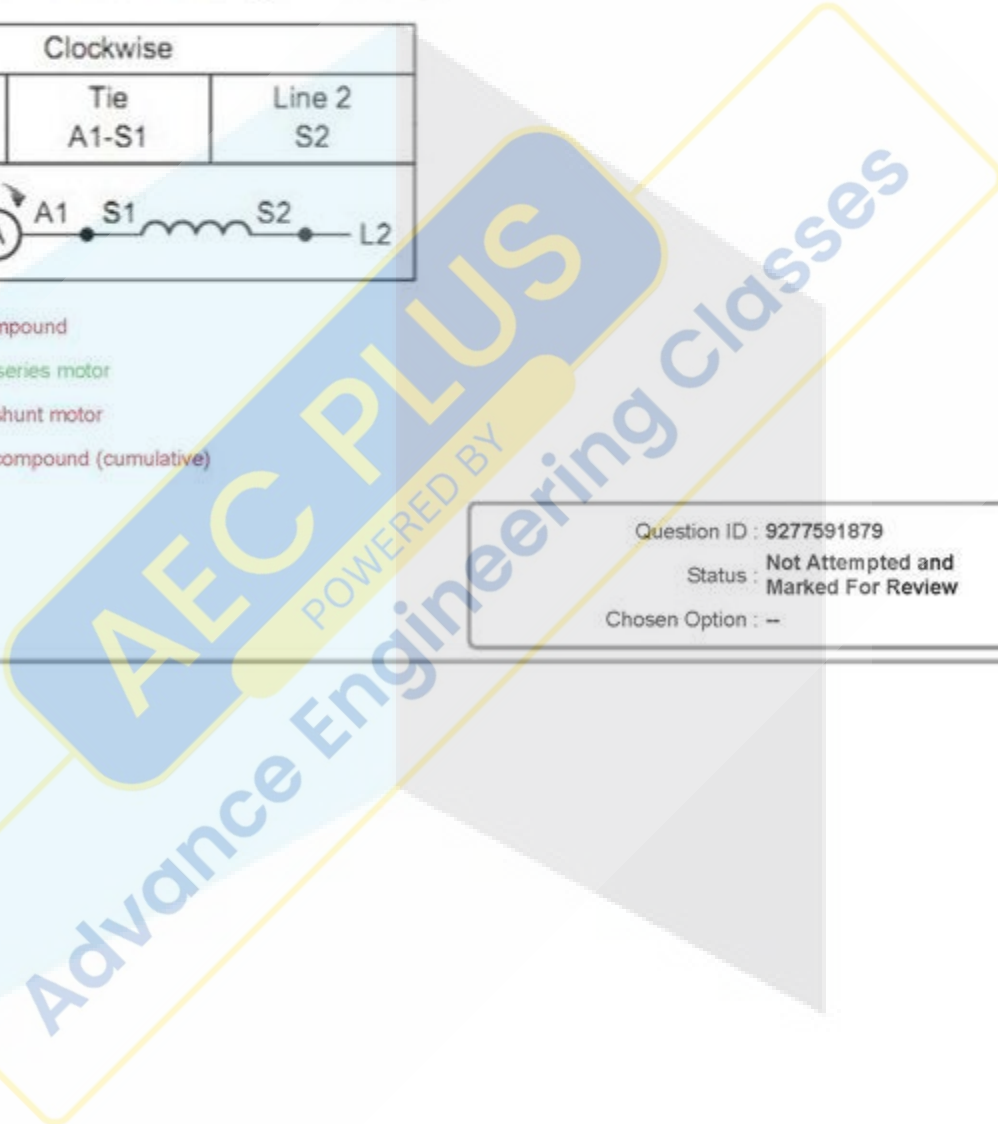
Question ID : 9277591886  
 Status : Answered  
 Chosen Option : B

Q.139 Which connection is related to the given drawing?

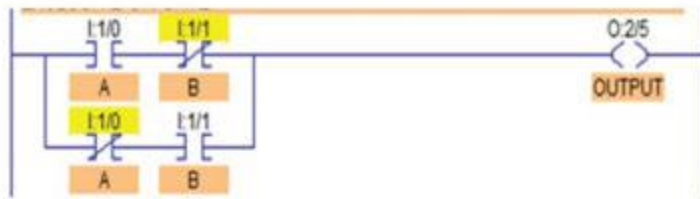


- Ans  A. Differential compound  
 B. Standard DC series motor  
 C. Standard DC shunt motor  
 D. Standard DC compound (cumulative)

Question ID : 9277591879  
 Status : Not Attempted and Marked For Review  
 Chosen Option : -



Q.140 Which type of logic gate is shown in the given ladder programming if A and B are inputs?



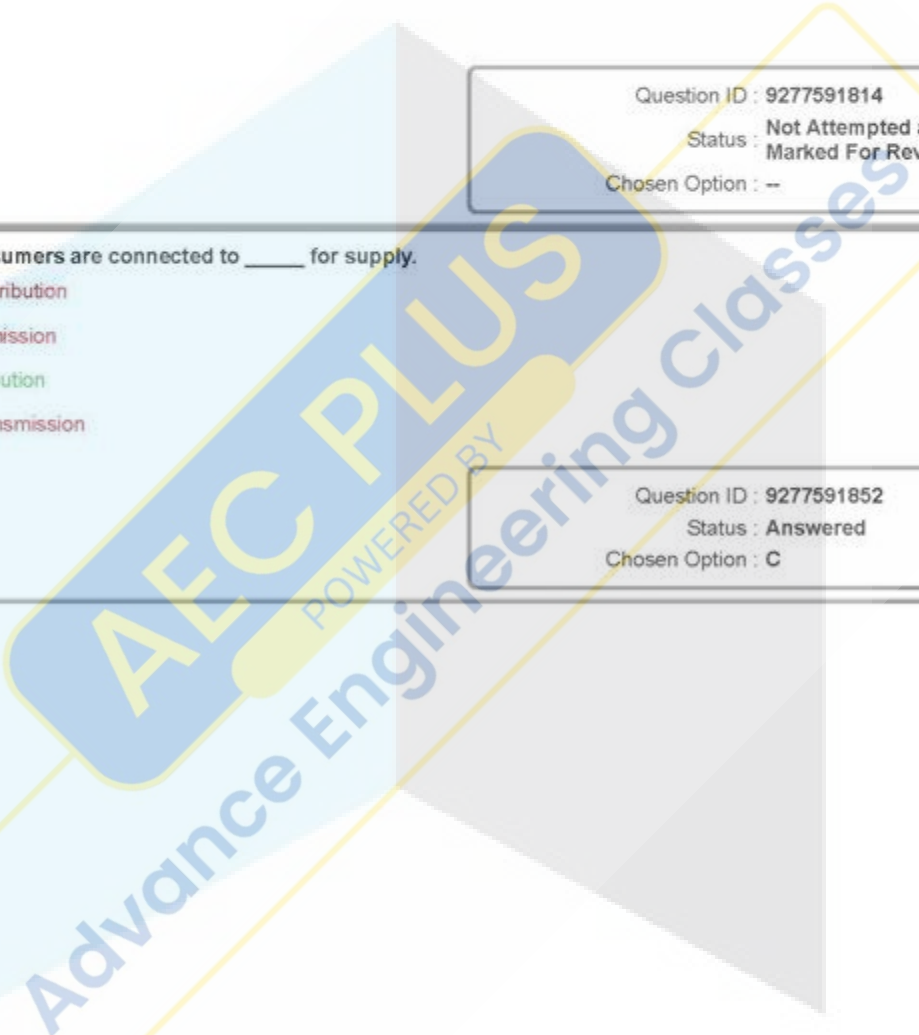
- Ans
- A. NOR
  - B. NAND
  - C. EXOR
  - D. EXNOR

Question ID : 9277591814  
 Status : Not Attempted and Marked For Review  
 Chosen Option : --

Q.141 Large industrial consumers are connected to \_\_\_\_\_ for supply.

- Ans
- A. secondary distribution
  - B. primary transmission
  - C. primary distribution
  - D. secondary transmission

Question ID : 9277591852  
 Status : Answered  
 Chosen Option : C



Q.142 Which parameter is NOT considered in the cash flow statement?

- Ans  A. Trading activities  
 B. Operating activities  
 C. Financing activities  
 D. Investing activities

Question ID : 9277591834  
 Status : Not Answered  
 Chosen Option : --

Q.143 Which of the following is NOT related to energy auditing?

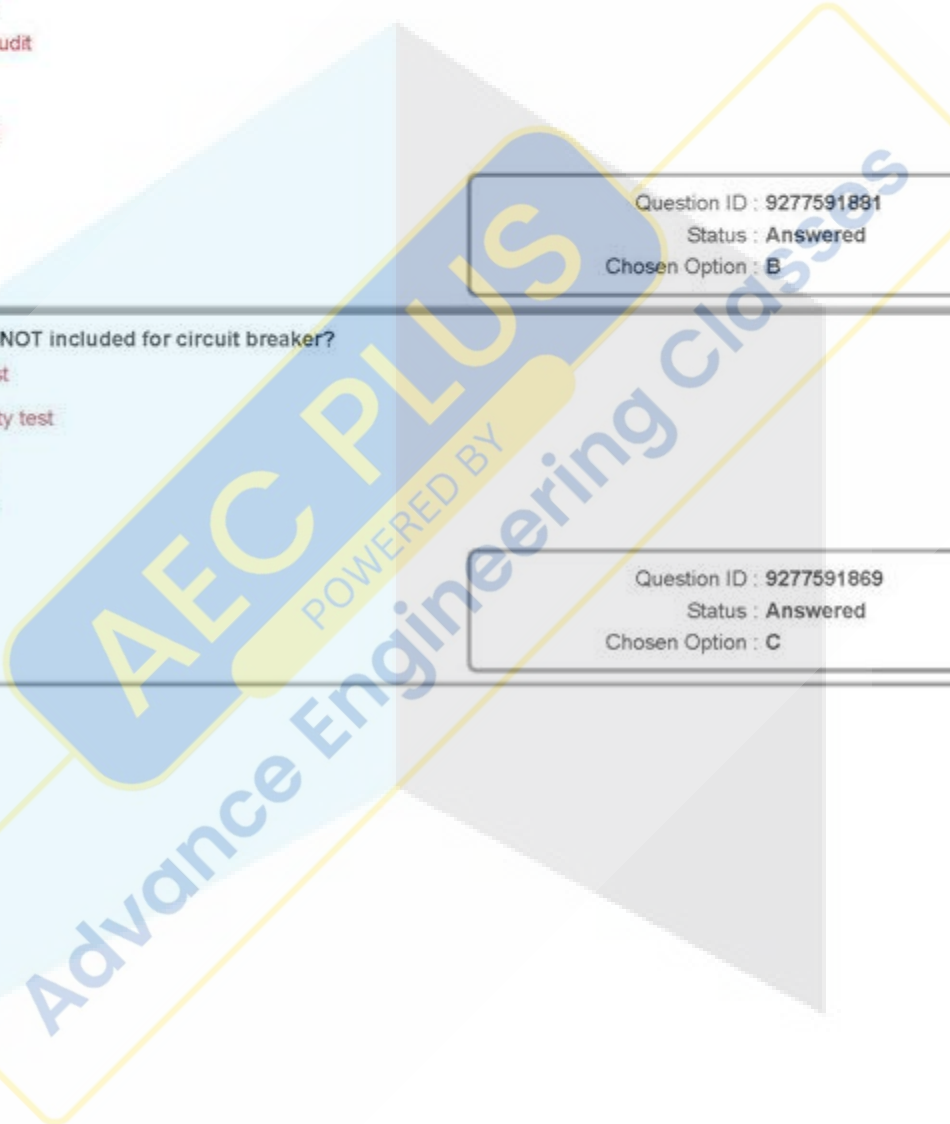
- Ans  A. Detailed audit  
 B. Walkthrough audit  
 C. Analysing  
 D. Benchmarking

Question ID : 9277591891  
 Status : Answered  
 Chosen Option : B

Q.144 Which type of test is NOT included for circuit breaker?

- Ans  A. Mechanical test  
 B. Making capacity test  
 C. Work out test  
 D. Dielectric test

Question ID : 9277591869  
 Status : Answered  
 Chosen Option : C



Q.145 The three terminals of a P type MOSFET are:

- Ans  A. drain, source, gate  
 B. anode, source, gate  
 C. cathode, anode, gate  
 D. two main terminals and a gate terminal

Question ID : 9277591798  
 Status : Answered  
 Chosen Option : A

Q.146 Which type of instrument is used to make an ohmmeter?

- Ans  A. Moving coil type  
 B. Repetitive type  
 C. Dynamometer type  
 D. Moving iron type

Question ID : 9277591787  
 Status : Answered  
 Chosen Option : A

Q.147 Why are armature windings made on the rotor of a DC machine?

- Ans  A. For production of voltage  
 B. To make rotation easy  
 C. For electromechanical conversion  
 D. For commutation

Question ID : 9277591777  
 Status : Answered  
 Chosen Option : C



Q.148 Which type of logic gate is shown in the given ladder programming if A and B are inputs?



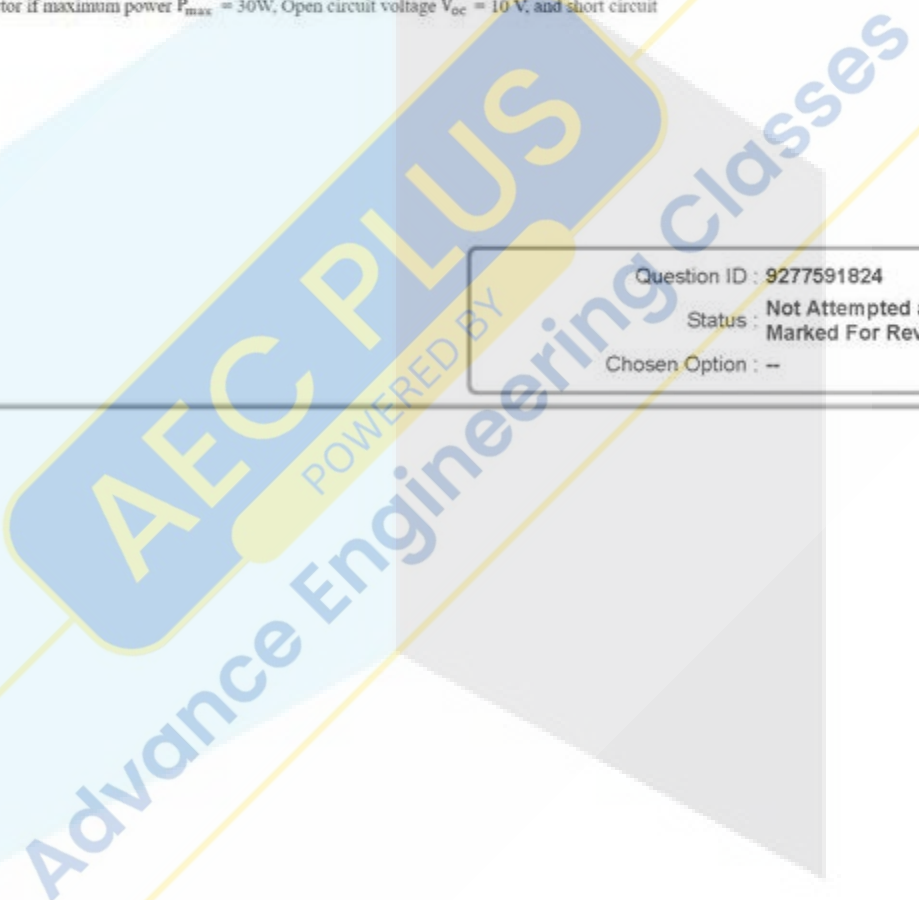
- Ans
- A. NOR
  - B. NAND
  - C. AND
  - D. OR

Question ID : 9277591813  
 Status : Answered  
 Chosen Option : C

Q.149 What is the value of fill factor if maximum power  $P_{max} = 30W$ , Open circuit voltage  $V_{oc} = 10 V$ , and short circuit current  $I_{sc} = 5 A$ ?

- Ans
- A. 1.6
  - B. 0.6
  - C. 60
  - D. 6

Question ID : 9277591824  
 Status : Not Attempted and Marked For Review  
 Chosen Option : --





Q.150 Which is the correct Boolean expression of output Q in the given figure?



- Ans
- A.  $A + B'$
  - B.  $A' + B$
  - C.  $A + B$
  - D.  $A' \cdot B$

Question ID : 9277591771  
Status : Answered  
Chosen Option : C

Section : General Knowledge or Awareness

Q.1 In which state is the 'Yaoshang' festival celebrated?

- Ans
- A. Assam
  - B. Arunachal Pradesh
  - C. Nagaland
  - D. Manipur

Question ID : 9277591906  
Status : Answered  
Chosen Option : A

**AEC PLUS**  
POWERED BY  
Advance Engineering Classes

Q.2 भारत में सांची स्तूप कहाँ स्थित है?

- Ans  A. मध्य प्रदेश  
 B. तेलंगाना  
 C. बिहार  
 D. उत्तर प्रदेश

Question ID : 9277591905  
Status : Answered  
Chosen Option : A

Q.3 'पद्मावत' उपन्यास किसने लिखा था?

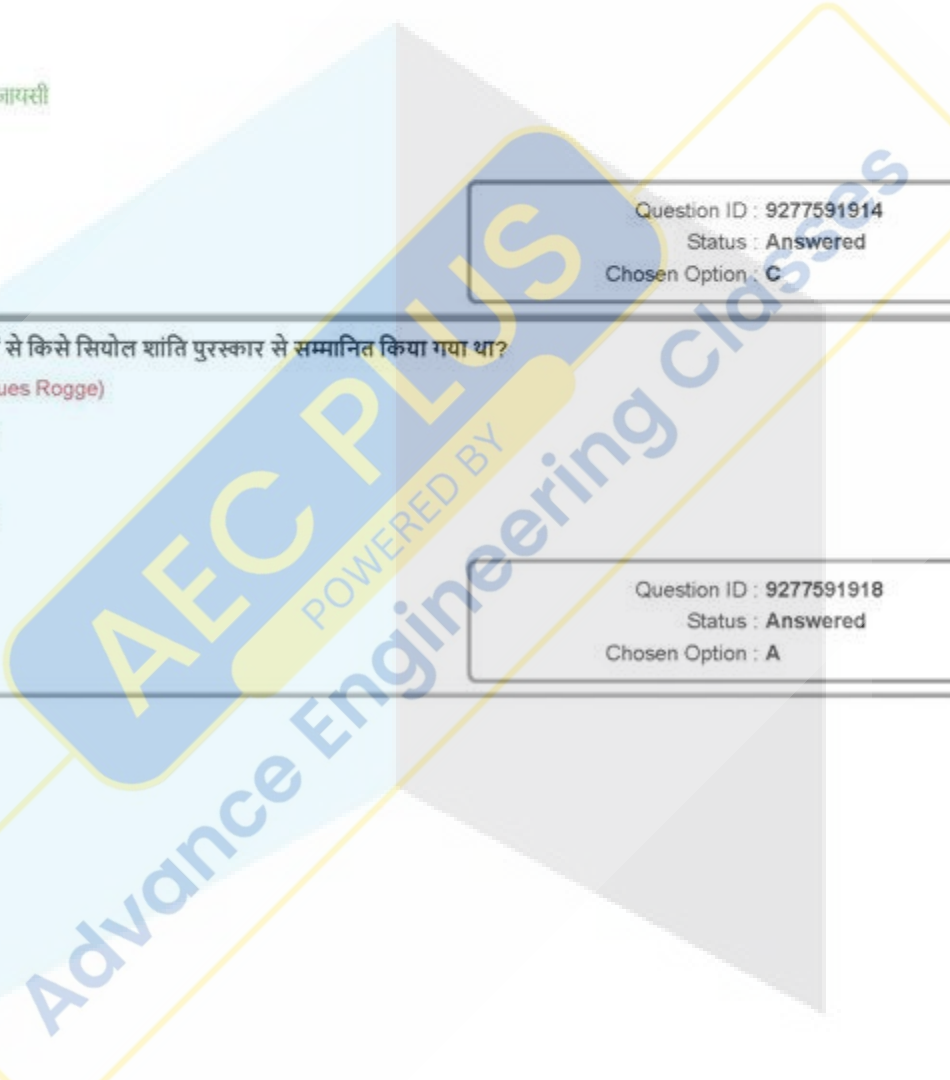
- Ans  A. कालिदास  
 B. तुलसीदास  
 C. मलिक मुहम्मद जायसी  
 D. अमीर खुसरो

Question ID : 9277591914  
Status : Answered  
Chosen Option : C

Q.4 अक्टूबर 2020 में, निम्न में से किसे सियोल शांति पुरस्कार से सम्मानित किया गया था?

- Ans  A. जेक्स रोगे (Jacques Rogge)  
 B. चार्ल्स एम. राइस  
 C. थॉमस बाच  
 D. नसरीन सोतोदेह

Question ID : 9277591918  
Status : Answered  
Chosen Option : A



Q.5 महान फुटबॉल खिलाड़ी डिएगो माराडोना ने फीफा (FIFA) विश्व कप टूर्नामेंट में किस राष्ट्र का प्रतिनिधित्व किया था?

- Ans
- A. ब्राज़ील
  - B. मेक्सिको
  - C. स्पेन
  - D. अर्जेंटीना

Question ID : 9277591922  
 Status : Answered  
 Chosen Option : A

Q.6 2011 की जनगणना के अनुसार, 'साक्षर' व्यक्ति कौन है?

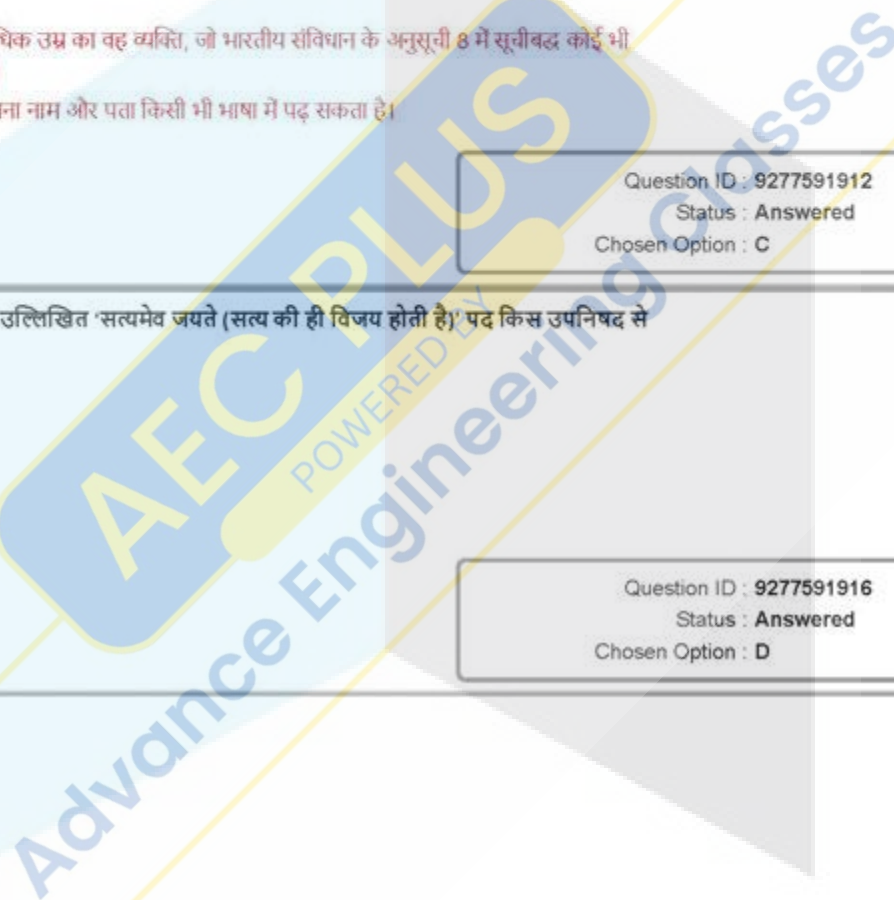
- Ans
- A. वह व्यक्ति, जो 7 वर्ष या उससे अधिक का हो, लिख-पढ़ सकता हो और अंकगणित के प्रश्नों को हल कर सकता हो।
  - B. वह व्यक्ति, जो 7 वर्ष या उससे अधिक उम्र का हो और जो किसी भी भाषा में समझ के साथ पढ़-लिख सकता है।
  - C. 5 वर्ष या उससे अधिक उम्र का वह व्यक्ति, जो भारतीय संविधान के अनुसूची 8 में सूचीबद्ध कोई भी भाषा में लिख-पढ़ सकता है।
  - D. वह व्यक्ति, जो अपना नाम और पता किसी भी भाषा में पढ़ सकता है।

Question ID : 9277591912  
 Status : Answered  
 Chosen Option : C

Q.7 भारत के राजचिह्न के नीचे उल्लिखित 'सत्यमेव जयते (सत्य की ही विजय होती है)' पद किस उपनिषद से लिया गया है?

- Ans
- A. गरुड़
  - B. गणपति
  - C. कैवल्य
  - D. मुंडक

Question ID : 9277591916  
 Status : Answered  
 Chosen Option : D



Q.8 'टारगेट ऑपियम पोडियम योजना (TOPS)' में \_\_\_\_\_ ।

- Ans
- A. 2024 और 2028 ओलंपिक के लिए खेल प्रशासकों को तैयार करना निहित है
  - B. 2024 और 2028 के ओलंपिक के लिए शीर्ष 5 प्रतिशत ग्रामीण एथलीटों को तैयार करना निहित है
  - C. 2024 और 2028 ओलंपिक के लिए जूनियर एथलीटों को तैयार करना निहित है
  - D. 2024 और 2028 ओलंपिक के लिए शीर्ष 5 प्रतिशत महिला एथलीटों को तैयार करना निहित है

Question ID : 9277591923

Status : Answered

Chosen Option : D

Q.9 Which of the following temperatures is closest to the temperature of a normal human body?

- Ans
- A. 18° C
  - B. 24° C
  - C. 37° C
  - D. 30° C

Question ID : 9277591910

Status : Answered

Chosen Option : B

Q.10 भारत सरकार की आयुष्मान भारत योजना के अंतर्गत किसी परिवार के लिए उपलब्ध वार्षिक स्वास्थ्य कवर की राशि कितनी है?

- Ans
- A. ₹2 लाख
  - B. ₹5 लाख
  - C. ₹4 लाख
  - D. ₹3 लाख

Question ID : 9277591907

Status : Answered

Chosen Option : B

Q.11 ऑस्कर जीतने वाले पहले भारतीय कौन थे?

- Ans
- A. सत्यजित रे
  - B. रेसुल पूकुट्टी
  - C. गुलज़ार
  - D. भानु अयैया

Question ID : 9277591917  
Status : Answered  
Chosen Option : A

Q.12 1930 में भारत की स्वतंत्रता संग्राम के दौरान आयोजित चटगांव शस्त्रागार छापामारी (Chittagong armoury raid) के नेता/नेतृत्वकर्ता कौन थे?

- Ans
- A. विनोय बसु
  - B. रास बिहारी बोस
  - C. अम्बिका चक्रवर्ती
  - D. सूर्य सेन

Question ID : 9277591915  
Status : Answered  
Chosen Option : D

Q.13 दिसंबर 2020 तक, अंतरराष्ट्रीय श्रम संगठन के महानिदेशक कौन थे?

- Ans
- A. जौन सोमाविया (Juan Somavia)
  - B. गाय राइडर (Guy Ryder)
  - C. फ्रांसिस बलानचार्ड (Francis Blanchard)
  - D. मिचेल हेंसने (Michel Hansenne)

Question ID : 9277591919  
Status : Answered  
Chosen Option : D



Q.14 The pre-monsoon showers experienced in Kerala and Karnataka, towards the close of summer, are known as:

- Ans
- A. jet streams
  - B. kalbaisakhi
  - C. western depressions
  - D. mango showers

Question ID : 9277591911  
Status : Answered  
Chosen Option : C

Q.15 निम्न में से कौन-सा सूक्ष्म, लघु और मध्यम उद्यम (MSME) क्षेत्र के प्रोत्तति, वित्त पोषण और विकास हेतु प्रमुख वित्तीय संस्थान के रूप में कार्य करता है?

- Ans
- A. SEBI
  - B. SBI
  - C. SIDBI
  - D. NABARD

Question ID : 9277591908  
Status : Answered  
Chosen Option : C

Q.16 निम्न में से किसे राजीव गांधी खेल रत्न पुरस्कार 2020 से सम्मानित नहीं किया गया था?

- Ans
- A. मरियप्पन थंगावेलु
  - B. विनेश फोगाट
  - C. मनिका बत्रा
  - D. बजरंग पुनिया

Question ID : 9277591924  
Status : Answered  
Chosen Option : C

Q.17 निम्न में से वह कौन-सी गैर-धातु है, जिसे कीटाणुओं को मारने के लिए स्विमिंग पूल में मिलाया जाता है?

- Ans
- A. क्लोरीन
  - B. ऑक्सीजन
  - C. नाइट्रोजन
  - D. आयोडीन

Question ID : 9277591909  
Status : Answered  
Chosen Option : A

Q.18 पर्वतीय स्थल माउंट आबू किस पर्वत श्रेणी में स्थित है?

- Ans
- A. काराकोरम पर्वत श्रेणी
  - B. अरावली पर्वत श्रेणी
  - C. सतपुड़ा पर्वत श्रेणी
  - D. हिमालय पर्वत श्रेणी

Question ID : 9277591913  
Status : Answered  
Chosen Option : B

Q.19 किसी राज्य के राज्यपाल को राष्ट्रपति द्वारा \_\_\_\_\_ वर्ष की अवधि के लिए नियुक्त किया जाता है और वह उसके प्रसादपर्यंत पद पर बना रहता है।

- Ans
- A. छह
  - B. तीन
  - C. पांच
  - D. दो

Question ID : 9277591920  
Status : Answered  
Chosen Option : A

AEC PLUS  
POWERED BY  
Advance Engineering Classes

Q.20 Under Article 32 of the Constitution of India, the Supreme Court is invested with the power to issue writs. Which of the following is NOT one of those writs?

- Ans  A. Anapneo  
 B. Quo warranto  
 C. Prohibition  
 D. Mandamus

Question ID : 9277591921  
 Status : Answered  
 Chosen Option : B

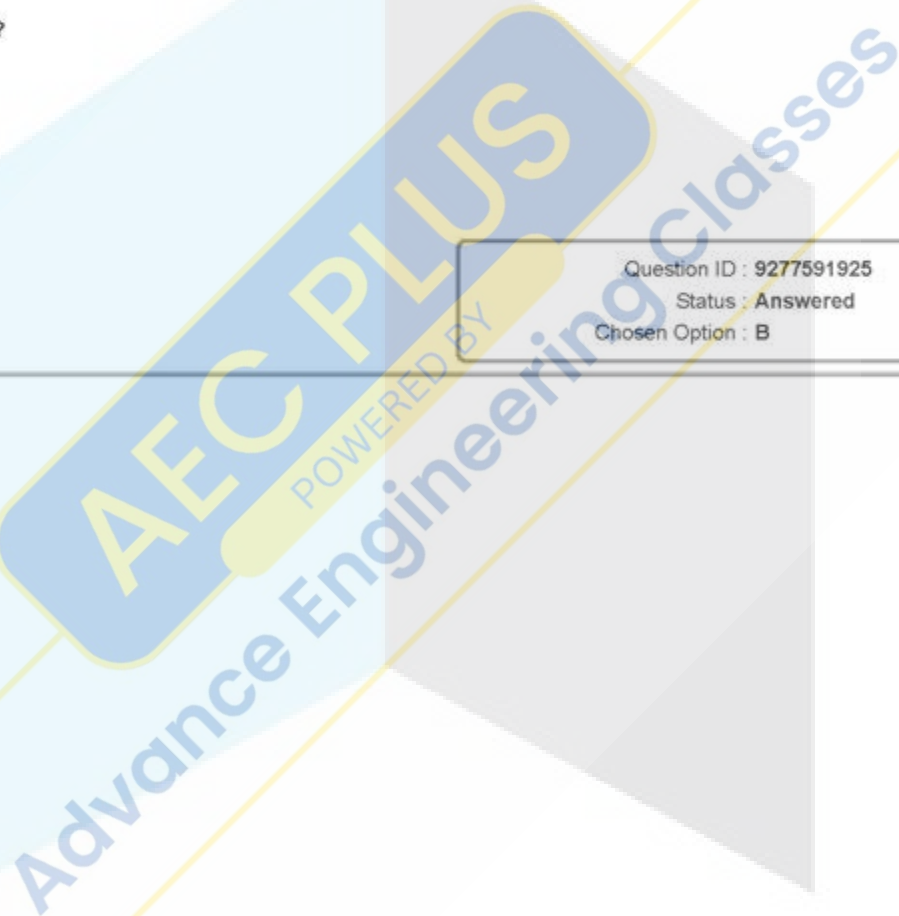
Section : Reasoning

Q.1 Which letter cluster from the options will replace the question mark in the following series:

FOK, JLM, NIO, RFQ, ?

- Ans  A. UCS  
 B. VCS  
 C. UDT  
 D. VBT

Question ID : 9277591925  
 Status : Answered  
 Chosen Option : B



Q.2 गरिमा, पीयूष की माँ है। मयंक, गरिमा का ससुर है। आयुषी, पीयूष की बहन है। तो मयंक का आयुषी से क्या रिश्ता है?

- Ans
- A. अंकल (बाचा/मामा)
  - B. भाई
  - C. पिता
  - D. दादा/नाना

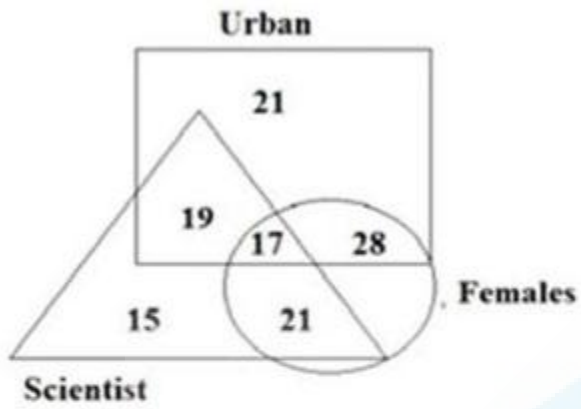
Question ID : 9277591932

Status : Answered

Chosen Option : D



Q.3 Study the diagram carefully and answer the question that follows:



What is the number of urban female scientists?

- Ans
- A. 28
  - B. 38
  - C. 17
  - D. 19

Question ID : 9277591938  
 Status : Answered  
 Chosen Option : C

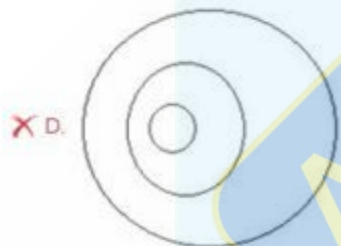
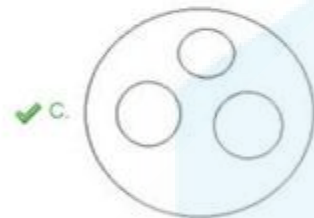
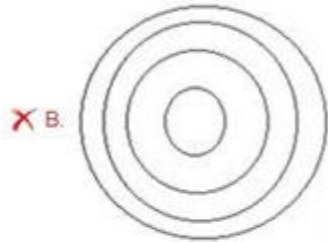
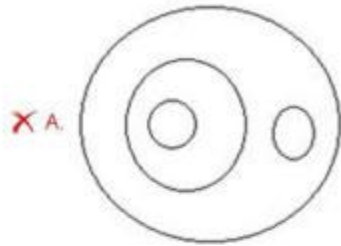
**AEC PLUS**  
 POWERED BY  
 Advance Engineering Classes



Q.4 इनमें से कौन सा आरेख निम्न के मध्य संबंध का सर्वश्रेष्ठ निरूपण करता है?

बोर्ड गेम्स, शतरंज, लुडो, कैरम

Ans



**AEC PLUS**  
POWERED BY  
Advance Engineering Classes

Question ID : 9277591937  
Status : Answered  
Chosen Option : C

Q.5 एक निश्चित कोडिंग प्रणाली में, यदि "RAJU" को 9-26-17-6 के रूप में कूटबद्ध किया जाता है, "KAVI" को 16-26-5-18 के रूप में कूटबद्ध किया जाता है, तो "TONY" को किस रूप में कूटबद्ध किया जाएगा?

- Ans
- A. 4-9-11-0
  - B. 6-10-12-1
  - C. 7-12-13-2
  - D. 8-12-14-4

Question ID : 9277591929  
Status : Answered  
Chosen Option : C

Q.6 यदि 'खालियर' को 'रायसेन' कहा जाता है, 'रायसेन' को 'भोपाल' कहा जाता है, 'भोपाल' को 'इंदौर' कहा जाता है, 'इंदौर' को 'जबलपुर' कहा जाता है और 'जबलपुर' को 'सीधी' कहा जाता है, तो मध्य प्रदेश की राजधानी कहां स्थित है?

- Ans
- A. रायसेन
  - B. भोपाल
  - C. इंदौर
  - D. जबलपुर

Question ID : 9277591930  
Status : Answered  
Chosen Option : C

**AEC PLUS**  
POWERED BY

Advance Engineering Classes

Q.7 दिए गए प्रश्न में एक कथन और उसके बाद दो तर्क I और II दिए गए हैं। आपको निर्धारित करना है कि कौन सा/से तर्क प्रबल है/हैं और उसी के अनुसार सही विकल्प का चयन कीजिए।

कथन : मृत्यु दंड समाप्त किया जाना चाहिए।

तर्क : I. नहीं, इसे नहीं समाप्त किया जाना चाहिए। यह दंड किसी अपराधी के कृत्यों के परिणामों से बच निकलने की संभावना को समाप्त करता है।

II. हां, इसे समाप्त किया जाना चाहिए। दंड उस व्यक्ति के लिए पुनर्वास के अवसर की संभावना को समाप्त करता है, जो आदतन अपराधी नहीं है।

- Ans
- A. कोई भी तर्क प्रबल नहीं है।
  - B. केवल तर्क I प्रबल है।
  - C. दोनों तर्क प्रबल हैं।
  - D. केवल तर्क II प्रबल है।

Question ID : 9277591934

Status : Answered

Chosen Option : D

**AEC PLUS**  
POWERED BY  
Advance Engineering Classes

Q.8 निम्न श्रृंखला में प्रश्नवाचक चिह्न (?) के स्थान पर कौन सी विकल्प आकृति आएगी?

A	G	V	C	V	D	?
P	S	P	S	d	S	

Ans

A.

A	G
P	S

B.

A	D
d	S

C.

A	G
P	S

D.

A	G
d	S

**AEC PLUS**  
POWERED BY  
Advance Engineering Classes

Question ID : 9277591941

Status : Answered

Chosen Option : B

Q.9 दिए गए समीकरण को गणितीय रूप से सही करने के लिए इसमें किन दो चिह्नों को आपस में बदला जाना चाहिए?

$$8 \div 3 + 9 - 27 \times 9 = 30$$

- Ans
- A. '+' और '-'
  - B. '-' और 'x'
  - C. '+' और '+'
  - D. '-' और 'x'

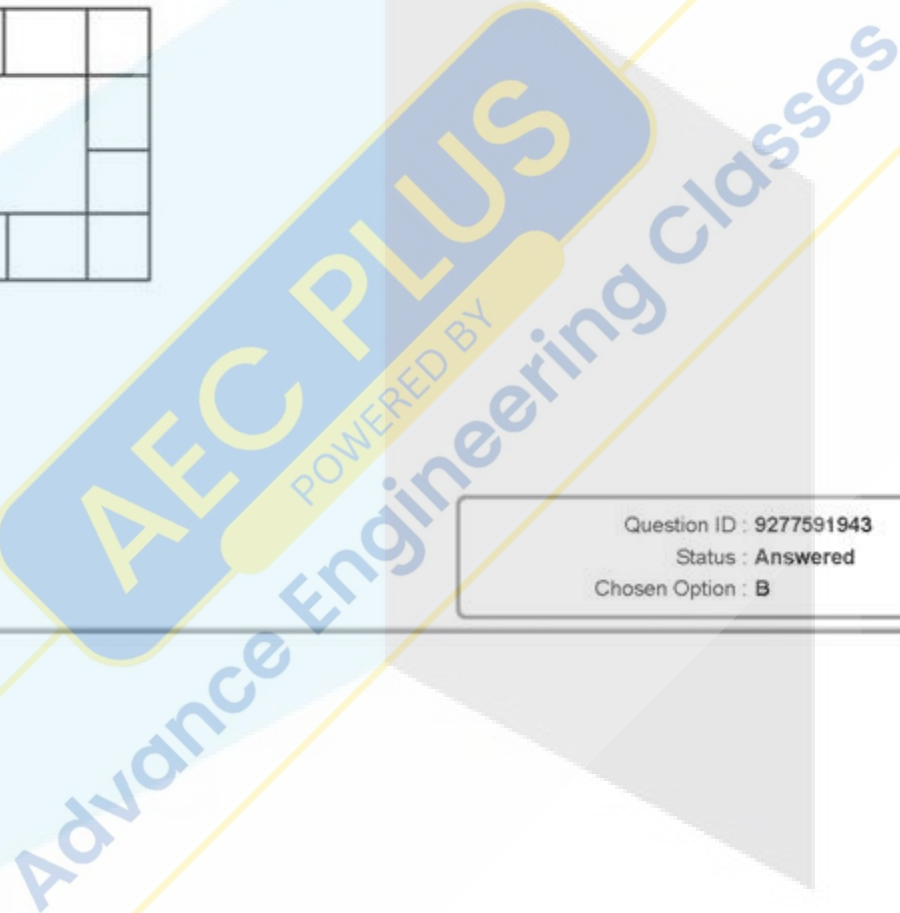
Question ID : 9277591936  
 Status : Answered  
 Chosen Option : B

Q.10 दी गई आकृति में कितने आयत हैं?



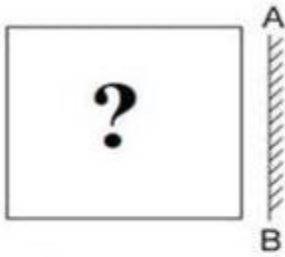
- Ans
- A. 35
  - B. 28
  - C. 33
  - D. 25

Question ID : 9277591943  
 Status : Answered  
 Chosen Option : B

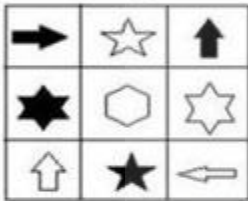




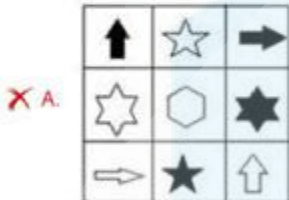
Q.11 दी गई निम्नांकित आकृति को प्राप्त करने के लिए, विकल्पों में से किस आकृति को दर्पण AB के समक्ष रखा जाना चाहिए?



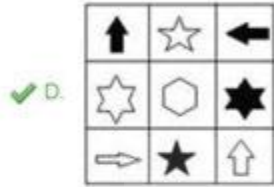
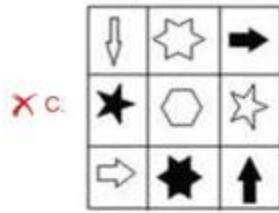
छवि आकृति



Ans



**AEC PLUS**  
POWERED BY  
Advance Engineering Classes

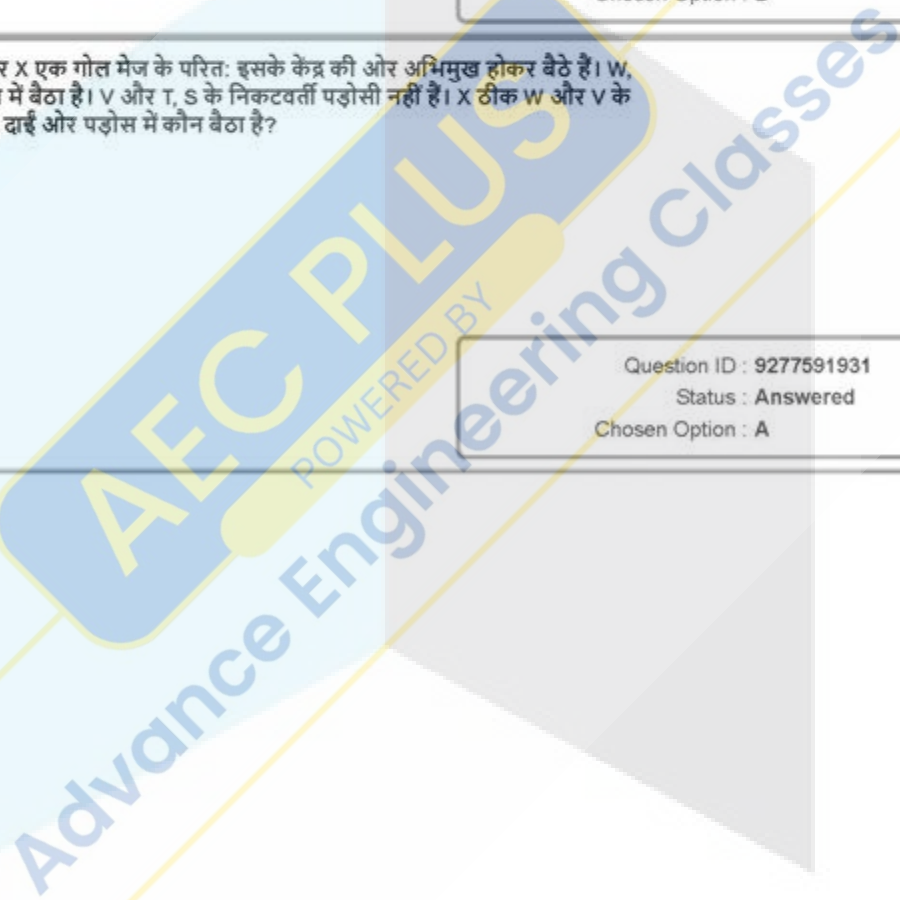


Question ID : 9277591940  
 Status : Answered  
 Chosen Option : D

Q.12 छः मित्र S, T, U, V, W और X एक गोल मेज के परितः इसके केंद्र की ओर अभिमुख होकर बैठे हैं। W, S के ठीक बाईं ओर पड़ोस में बैठा है। V और T, S के निकटवर्ती पड़ोसी नहीं हैं। X ठीक W और V के बीच में बैठा है। U के ठीक दाईं ओर पड़ोस में कौन बैठा है?

- Ans  A. T  
 B. R  
 C. S  
 D. V

Question ID : 9277591931  
 Status : Answered  
 Chosen Option : A

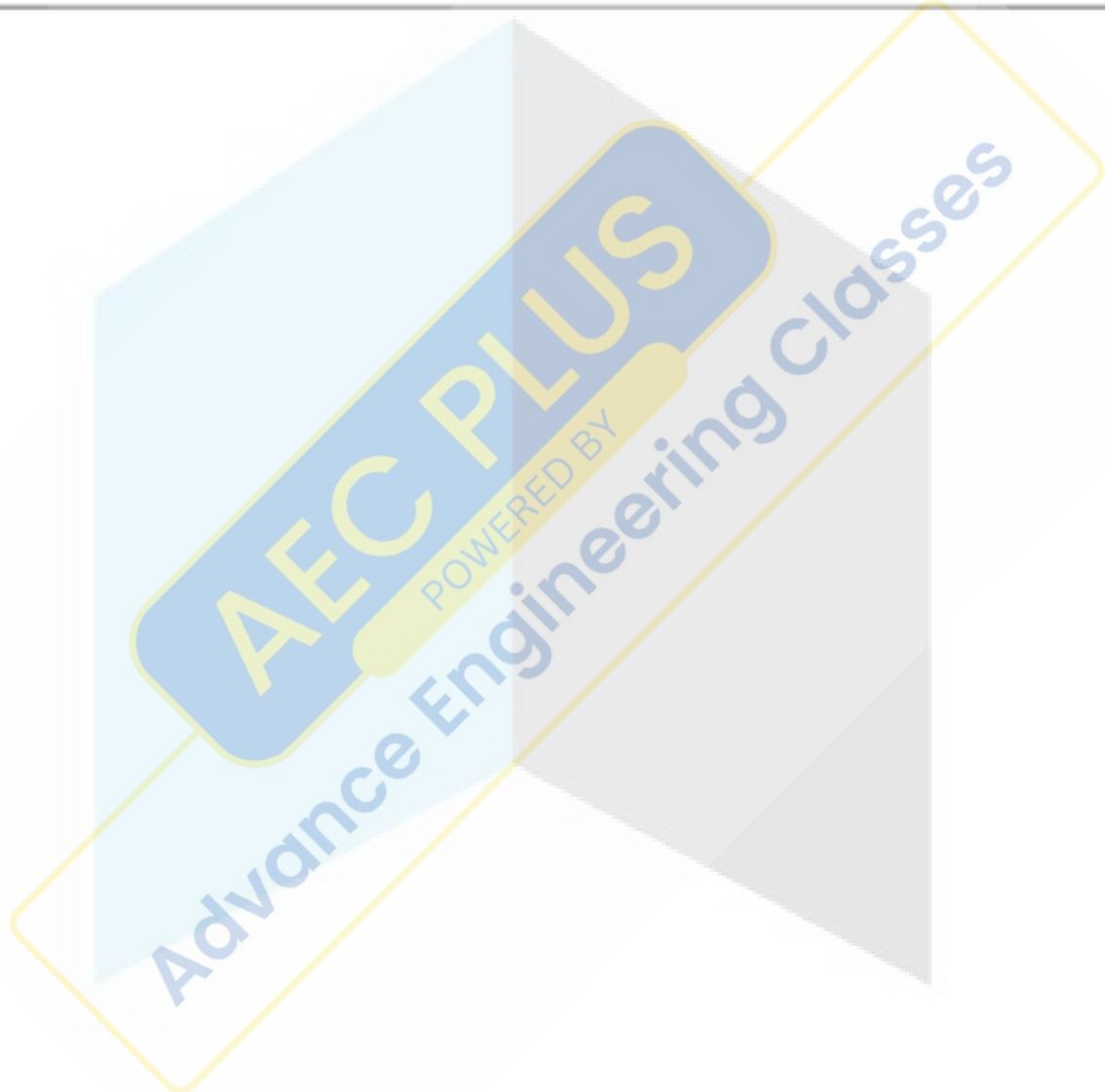


Q.13 निम्नांकित श्रृंखला में कौन सा अक्षरांकीय-समूह प्रश्नवाचक चिह्न (?) के स्थान पर आएगा?

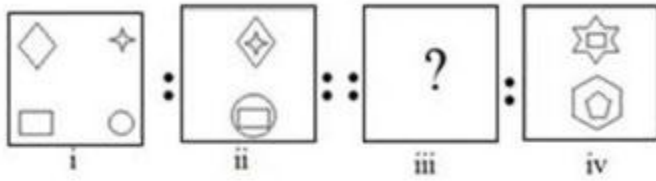
A4L, B8N, D12Q, G16S, K20V, ?

- Ans  A. P24X  
 B. Q26Y  
 C. O24Y  
 D. R24T

Question ID : 9277591926  
Status : Answered  
Chosen Option : A

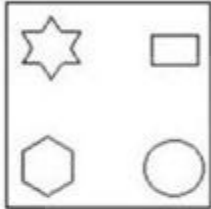


Q.14 Select the option that is related to the fourth figure in the same way as the first figure is related to the second figure.



Ans

A.



B.

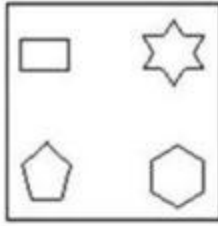


C.



AEC PLUS  
POWERED BY  
Advance Engineering Classes

X D.



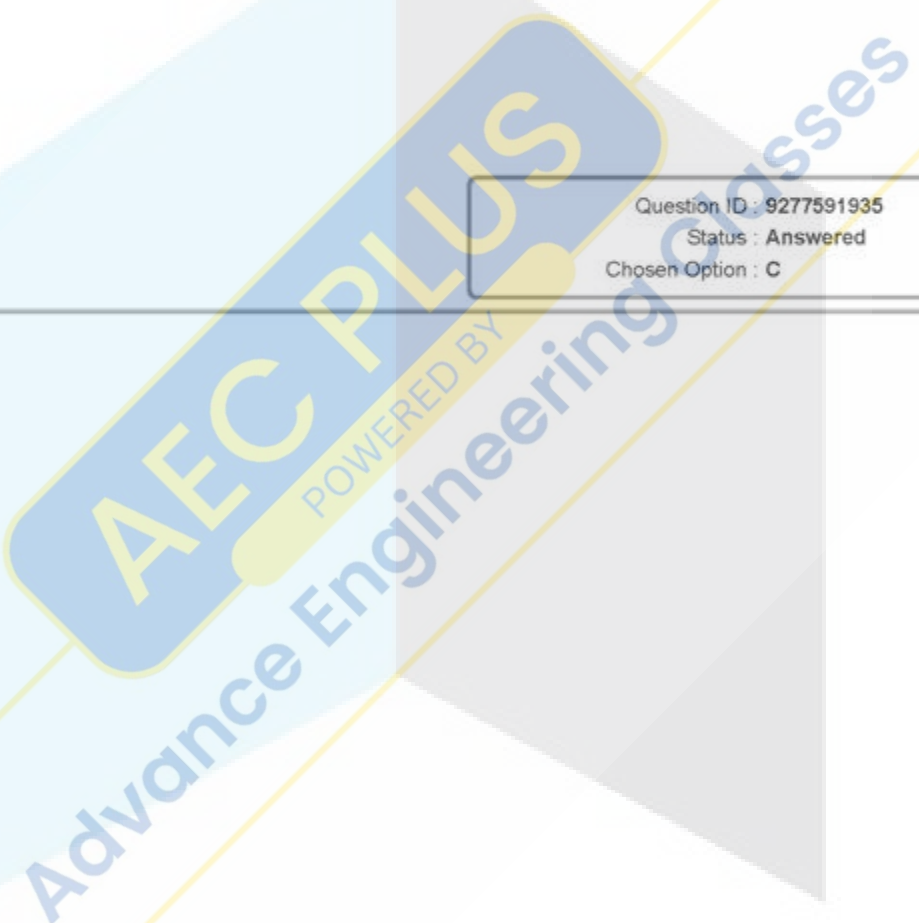
Question ID : 9277591942  
Status : Answered  
Chosen Option : B

Q.15 निम्नांकित श्रृंखला में कौन सी संख्या प्रश्नवाचक चिह्न (?) के स्थान पर आएगी?

123, 146, 171, 198, ?

- Ans
- X A. 308
  - X B. 268
  - ✓ C. 227
  - X D. 324

Question ID : 9277591935  
Status : Answered  
Chosen Option : C





Q.16 तीन कथन दिए गए हैं और उनके बाद चार निष्कर्ष I, II, III और IV दिए गए हैं। यह मानते हुए कि दी गई सूचना सही है, भले ही वह सामान्य रूप से ज्ञात तथ्यों से भिन्न हो, बताइए कि दिए गए निष्कर्षों में से कौन से निष्कर्ष कथनों का तार्किक रूप से अनुसरण करते हैं।

कथन :

सभी बॉक्स मेज हैं।  
सभी मेजे चटाइयां हैं।  
सभी चटाइयां कुर्सियां हैं।

निष्कर्ष :

I. कुछ कुर्सियां बॉक्स हैं।  
II. सभी बॉक्स कुर्सियां हैं।  
III. कुछ चटाइयां बॉक्स हैं।  
IV. सभी मेजे बॉक्स हैं।

- Ans
- A. निष्कर्ष I, II या III में से कोई भी एक अनुसरण करता है।
  - B. केवल निष्कर्ष I और III अनुसरण करते हैं।
  - C. केवल निष्कर्ष I, II और III अनुसरण करते हैं।
  - D. निष्कर्ष II या IV में से कोई एक अनुसरण करता है।

Question ID : 9277591933

Status : Answered

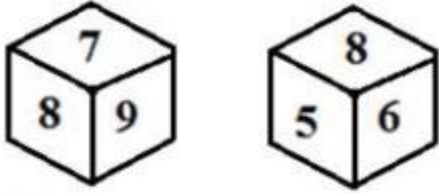
Chosen Option : C

AEC PLUS

POWERED BY

Advance Engineering Classes

Q.17 एक पासे की दो अलग-अलग स्थितियां दर्शाई गई हैं जिस पर संख्याएं 4, 5, 6, 7, 8 और 9 अंकित हैं। उस संख्या को पहचानिए जो संख्या 7 वाले फलक के विपरीत फलक पर होगी।



- Ans
- A. 4
  - B. 9
  - C. 5
  - D. 6

Question ID : 9277591944  
 Status : Answered  
 Chosen Option : D

Q.18 उस विकल्प का चयन कीजिए जिसका तीसरे शब्द से वही संबंध है, जो दूसरे शब्द का पहले शब्द से है।

Finish : End :: Hide : ?

- Ans
- A. Flaunt
  - B. Expose
  - C. Conceal
  - D. Disclose

Question ID : 9277591928  
 Status : Answered  
 Chosen Option : C



Q.19 उस विकल्प का चयन कीजिए जिसका तीसरे अक्षर-समूह से वही संबंध है, जो दूसरे अक्षर-समूह का पहले अक्षर-समूह से है।

NUPK : SZUP :: GPLT : ?

- Ans
- A. MSQZ
  - B. LTPX
  - C. LUQY
  - D. NUQZ

Question ID : 9277591927  
Status : Answered  
Chosen Option : C

Q.20 रवि और किशन एक ही स्थान से चलना आरंभ करते हैं। रवि पूर्व दिशा की ओर 4 km चलता है, दाएं मुड़ता है और 3 km चलता है। किशन उत्तर दिशा में 4 km चलता है, दाएं मुड़ता है और 4 km चलता है। फिर किशन बाएं मुड़कर 1 km चलता है। वे अब एक-दूसरे से कितनी दूरी पर हैं?

- Ans
- A. 8 km
  - B. 10 km
  - C. 12 km
  - D. 6 km

Question ID : 9277591939  
Status : Answered  
Chosen Option : A

Section : General Hindi

AEC PLUS  
POWERED BY  
Advance Engineering Classes

Q.1 निम्नलिखित में से कौन सा शब्द तत्सम है?

- Ans  A. चूना  
 B. चीता  
 C. चना  
 D. चक्र

Question ID : 9277591948  
Status : Answered  
Chosen Option : D

Q.2 परिवर्तन में किस उपसर्ग का प्रयोग हुआ है?

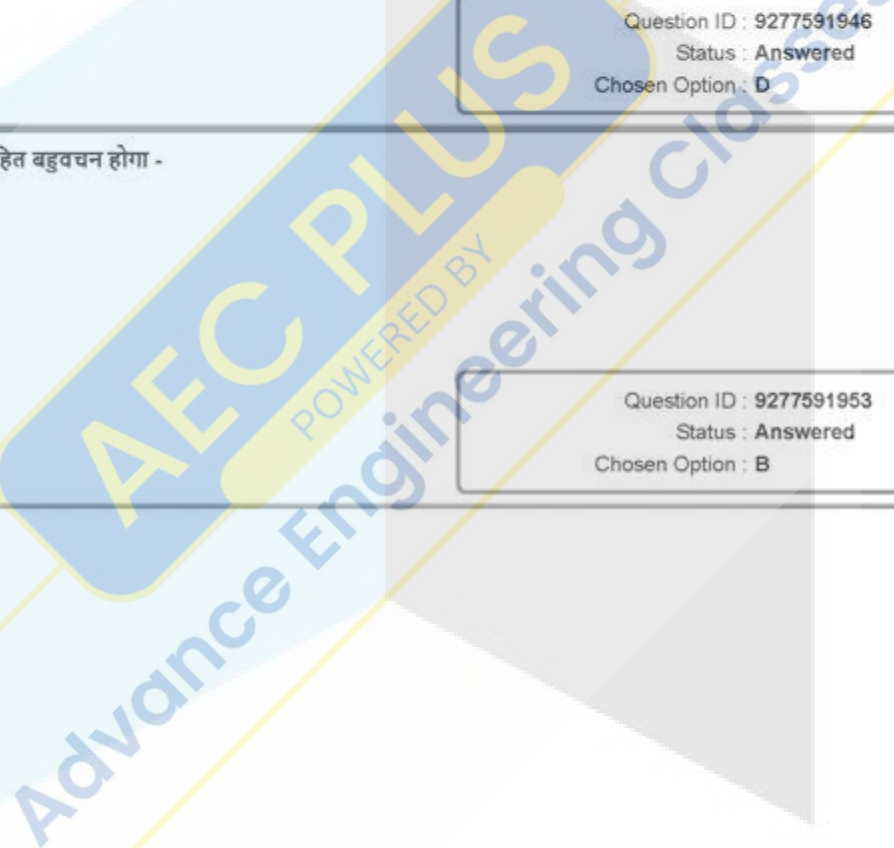
- Ans  A. प  
 B. पर  
 C. परी  
 D. परि

Question ID : 9277591946  
Status : Answered  
Chosen Option : D

Q.3 अध्यापिका का विभक्तिरहित बहुवचन होगा -

- Ans  A. अध्यापिके  
 B. अध्यापिकाएँ  
 C. अध्यापिकाओं  
 D. अध्यापिकें

Question ID : 9277591953  
Status : Answered  
Chosen Option : B



Q.4 दोष लगाना' अर्थ के लिए उपयुक्त मुहावरा कौन सा है?

- Ans
- A. ढोंग अड़ाना
  - B. डकार जाना
  - C. डंका बजाना
  - D. ठीकरा फोड़ना

Question ID : 9277591954  
Status : Answered  
Chosen Option : D

Q.5 मिलावट' में किस प्रत्यय का प्रयोग हुआ है?

- Ans
- A. आवट
  - B. वट
  - C. अवट
  - D. लावट

Question ID : 9277591947  
Status : Answered  
Chosen Option : A

Q.6 जो आँखों से संबंधित हो' वाक्यांश के लिए सार्थक शब्द कौन सा है?

- Ans
- A. दृश्य
  - B. आकर्षक
  - C. लोचन
  - D. चाक्षुष

Question ID : 9277591950  
Status : Answered  
Chosen Option : C

AEC PLUS  
POWERED BY  
Advance Engineering Classes



Q.7 निम्नलिखित में से कौन सा शब्द स्त्रीलिंग नहीं है?

- Ans
- A. पंचायत
  - B. पसंद
  - C. पकड़
  - D. पकवान

Question ID : 9277591952  
Status : Answered  
Chosen Option : C

Q.8 कारक और उससे संबंधित परसर्ग के निम्न समुच्चय में कौन सा सुमेलित नहीं है?

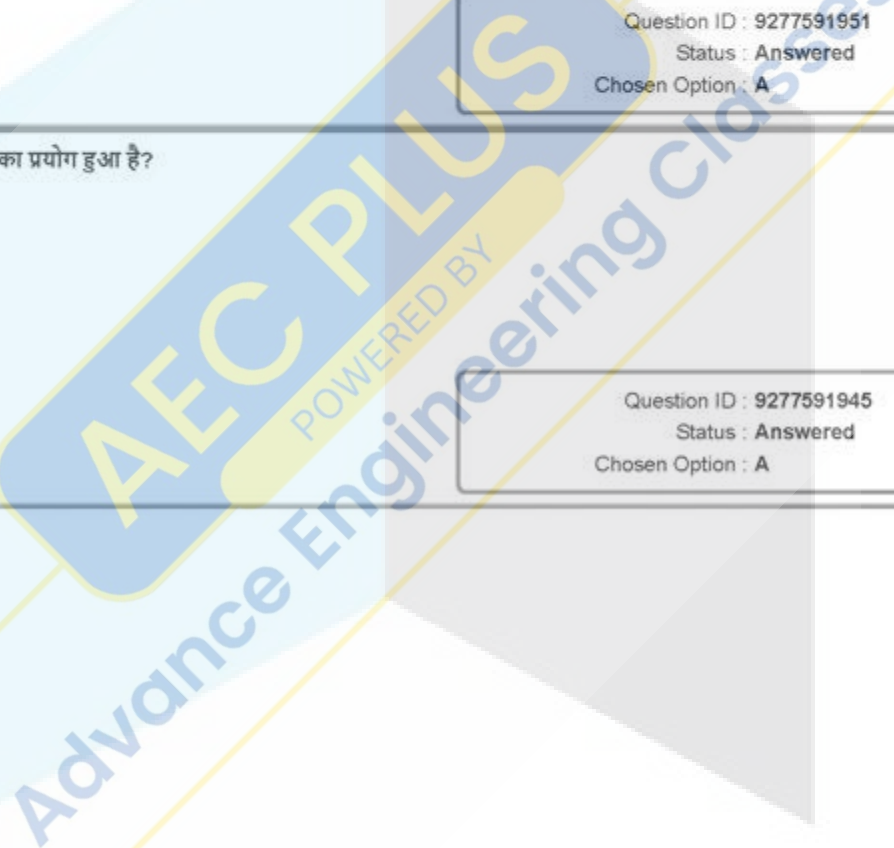
- Ans
- A. कर्म - में
  - B. अधिकरण - पर
  - C. संबंध - के
  - D. कर्ता - ने

Question ID : 9277591951  
Status : Answered  
Chosen Option : A

Q.9 संस्करण में किस उपसर्ग का प्रयोग हुआ है?

- Ans
- A. सम्
  - B. सं
  - C. संस्
  - D. सन्

Question ID : 9277591945  
Status : Answered  
Chosen Option : A



Q.10 मरते दम तक' वाक्यांश के लिए सार्थक शब्द कौन सा है?

- Ans
- A. अमर
  - B. आजन्म
  - C. मरण
  - D. आमरण

Question ID : 9277591949

Status : Answered

Chosen Option : D

